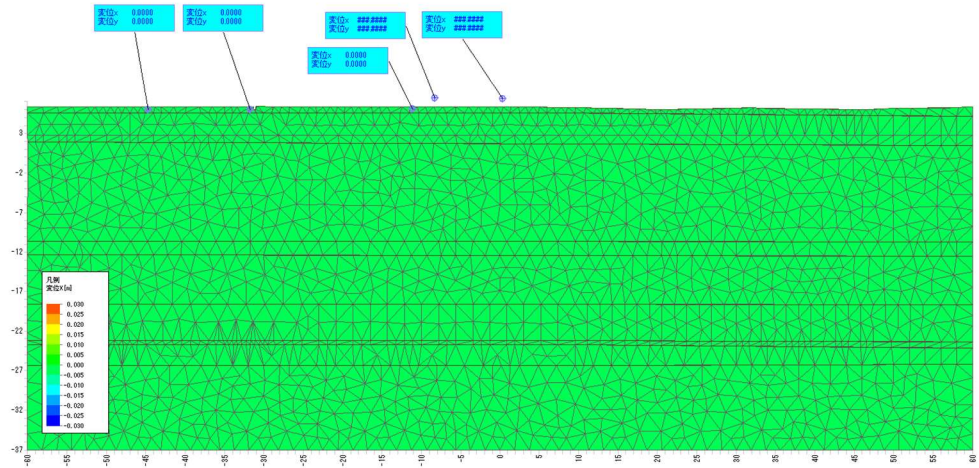
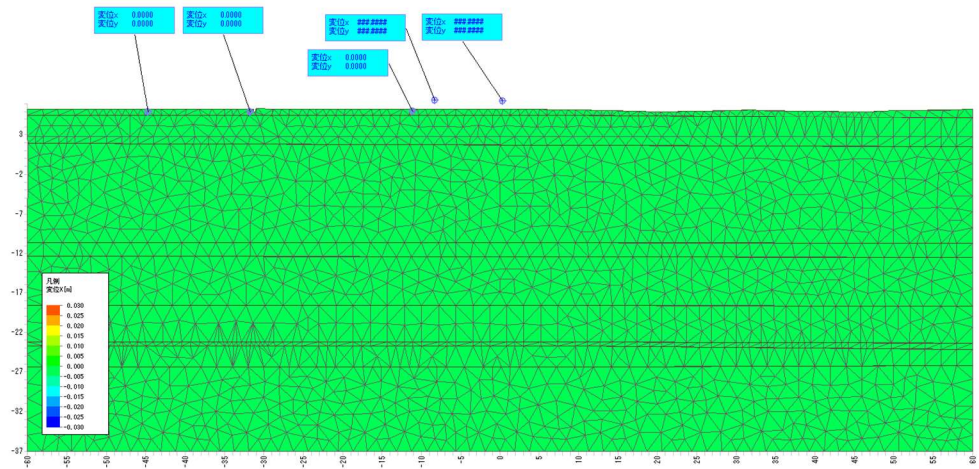


# X変位図

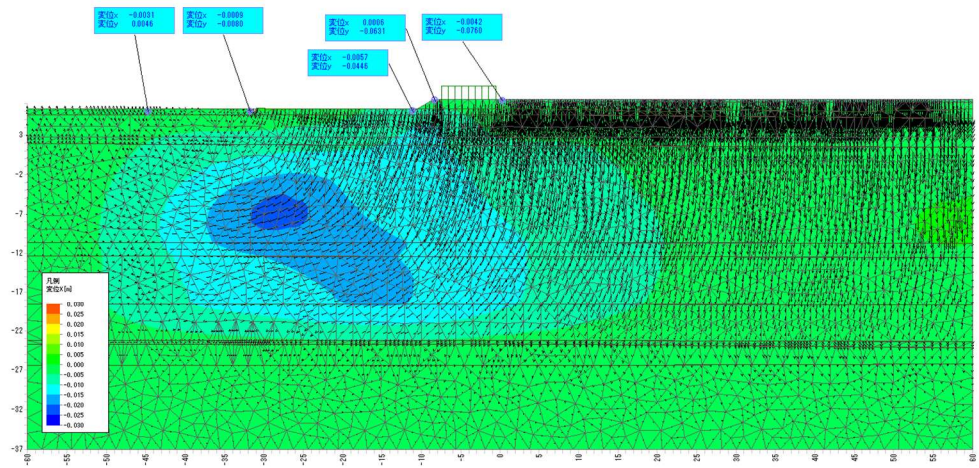
現地形



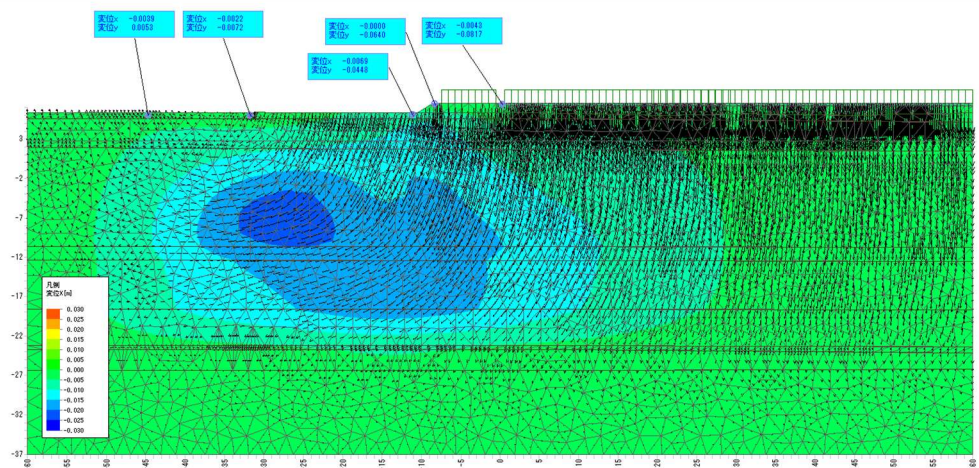
掘削



造成後

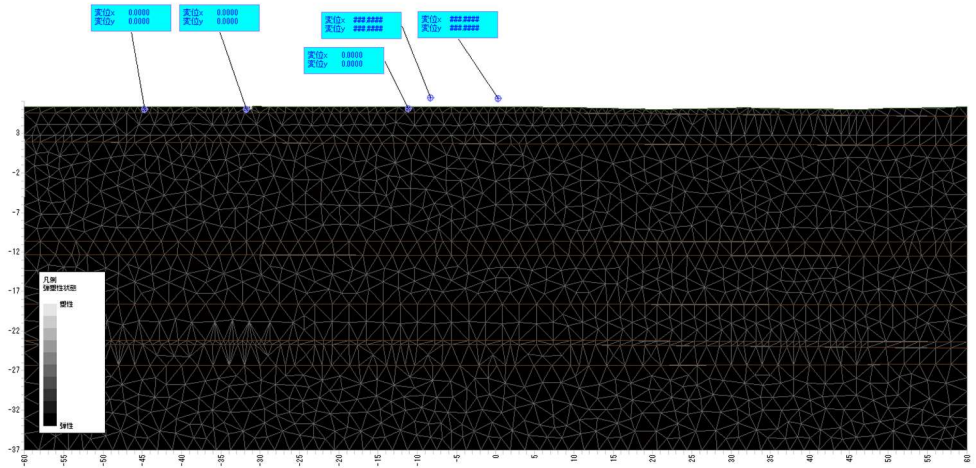


供用  
(交通荷重)

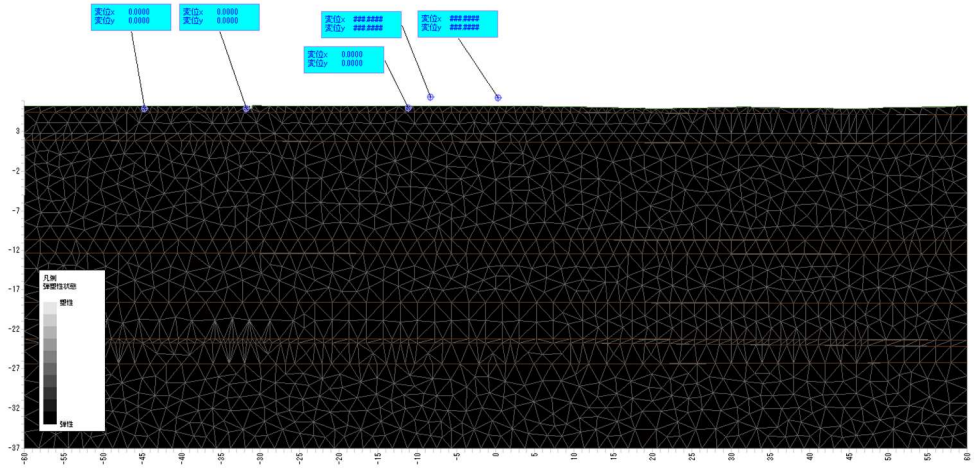


# 弾塑性図

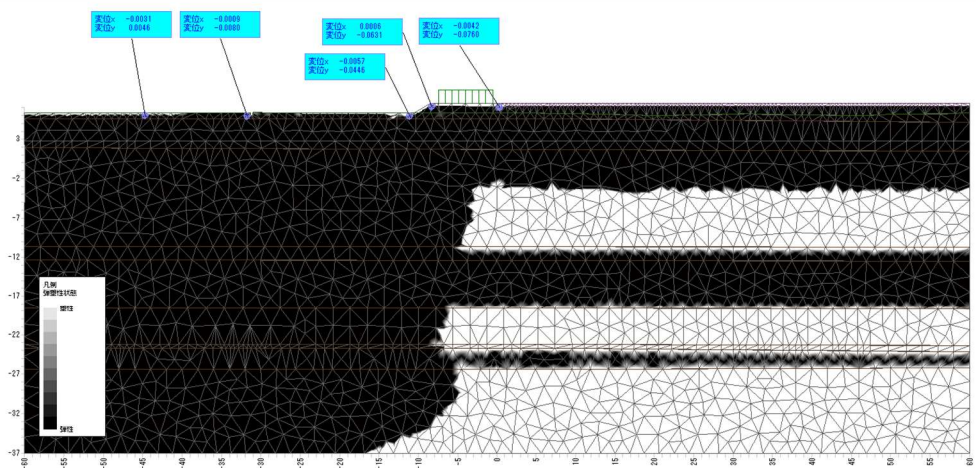
現地形



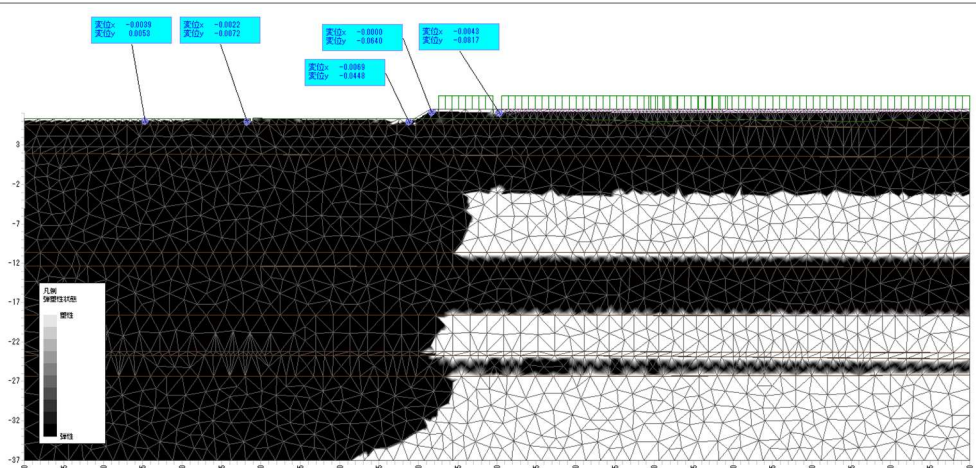
掘削

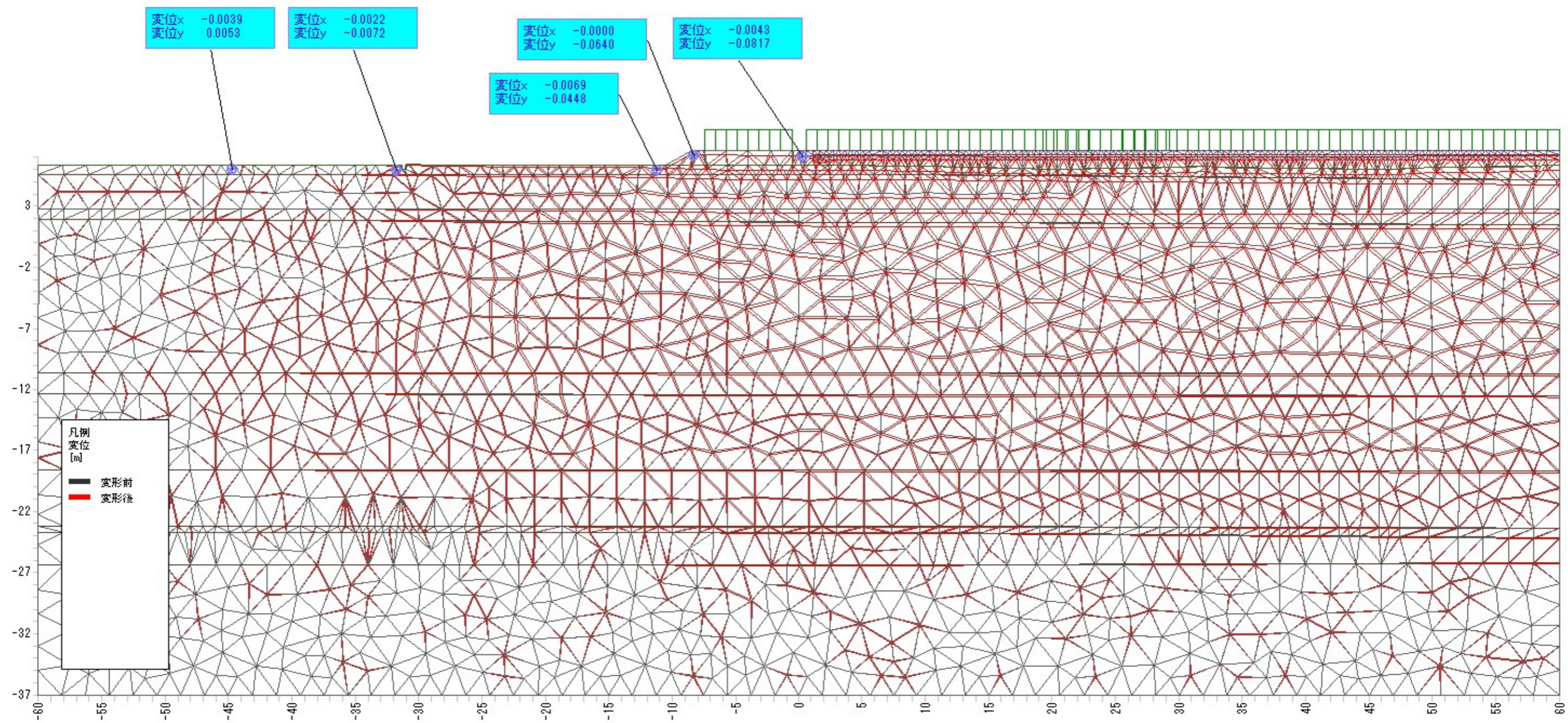


造成後

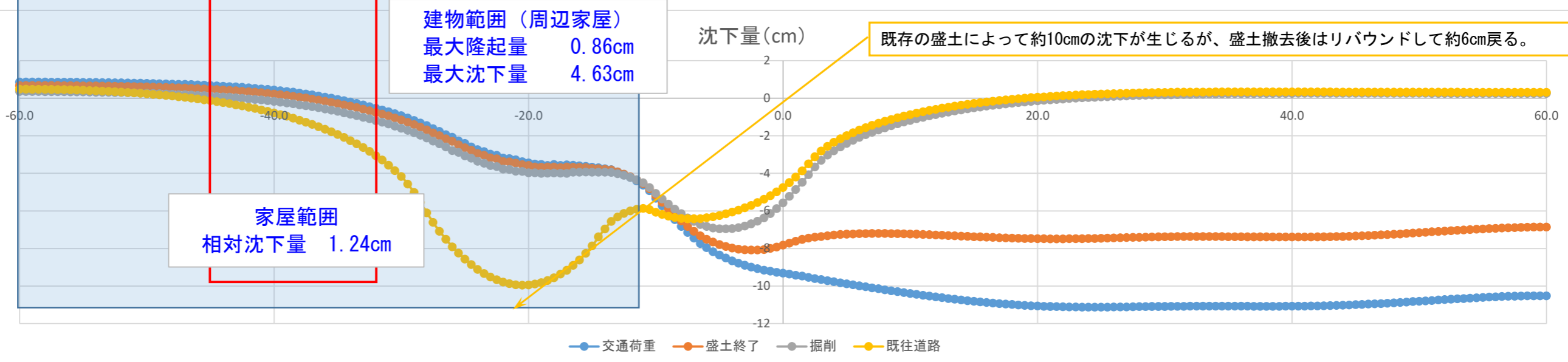
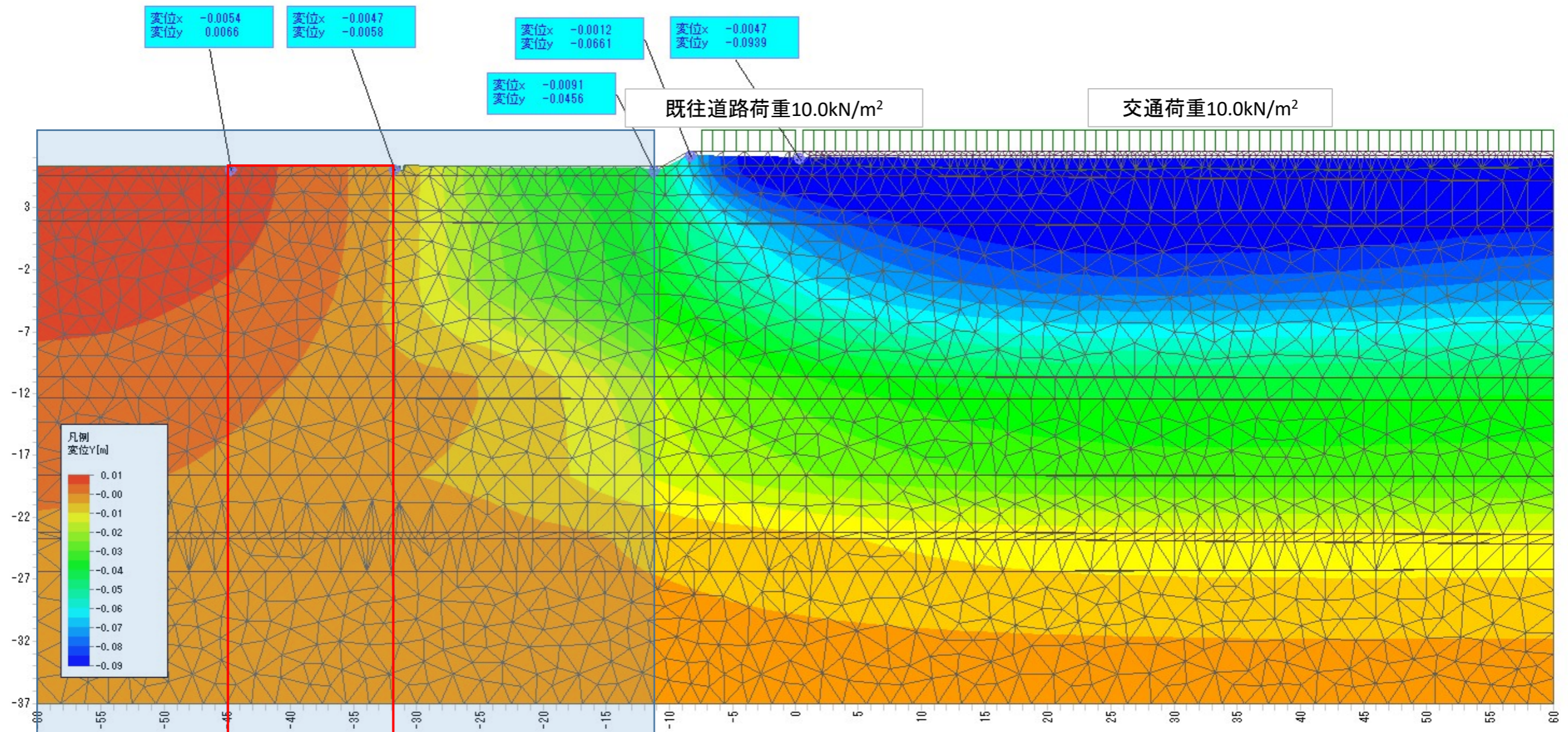


供用  
(交通荷重)





D-D' 断面  
GH=7.50m

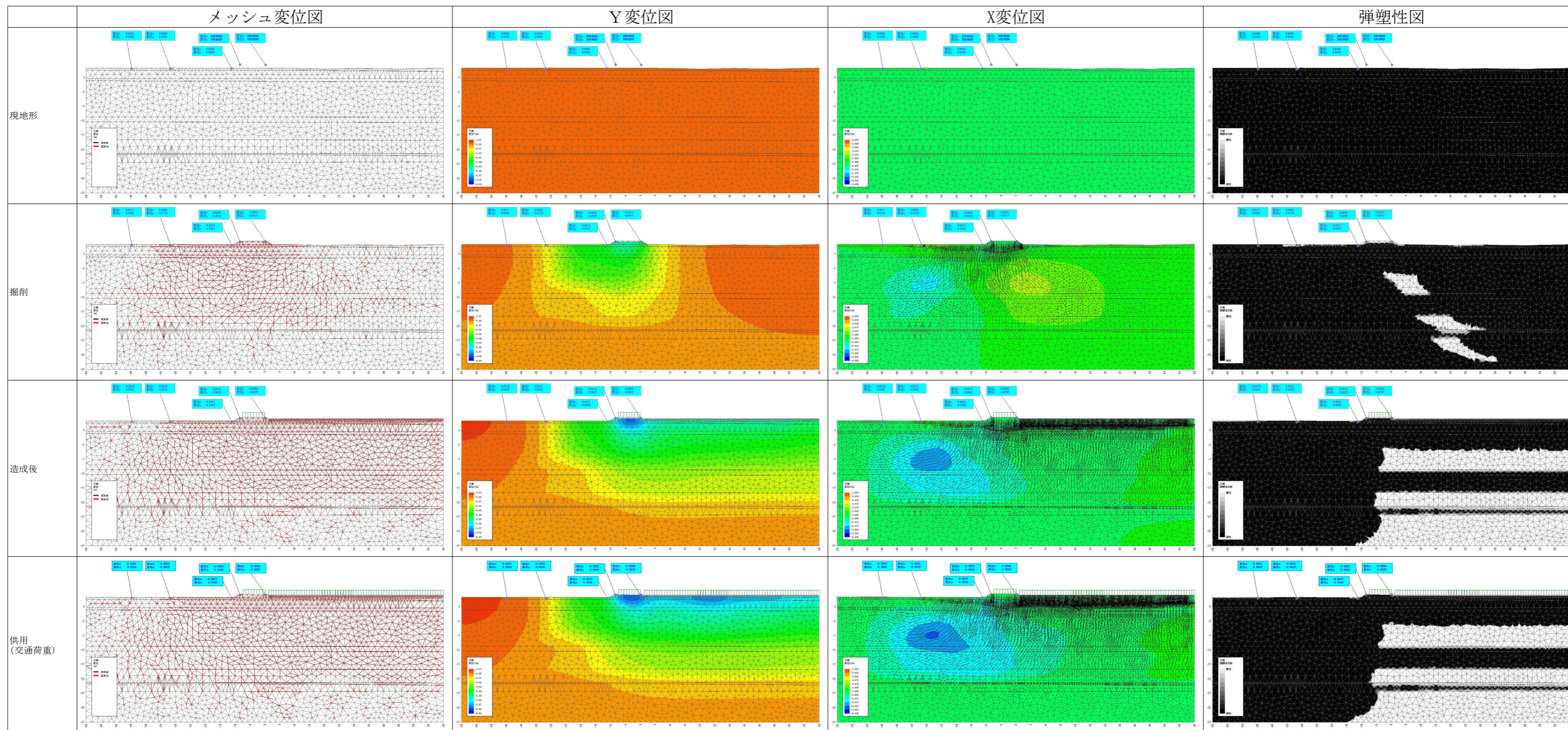


10m範囲の相対沈下量	沈下量(cm)				
	位置 X(m)	交通荷重	盛土終了	掘削	既往道路
	-60.0	0.859	0.68	0.359	0.483
-0.08	-59.5	0.86	0.68	0.359	0.482
-0.08	-59.0	0.86	0.68	0.359	0.48
-0.09	-58.5	0.858	0.679	0.357	0.477
-0.10	-58.0	0.857	0.677	0.356	0.473
-0.11	-57.5	0.856	0.676	0.354	0.468
-0.12	-57.0	0.855	0.675	0.352	0.462
-0.13	-56.5	0.852	0.672	0.348	0.454
-0.14	-56.0	0.85	0.669	0.345	0.445
-0.15	-55.5	0.848	0.667	0.341	0.436
-0.17	-55.0	0.845	0.663	0.337	0.424
-0.18	-54.5	0.841	0.659	0.332	0.412
-0.20	-54.0	0.838	0.655	0.327	0.398
-0.21	-53.5	0.835	0.651	0.321	0.383
-0.23	-53.0	0.83	0.646	0.315	0.366
-0.24	-52.5	0.824	0.64	0.308	0.348
-0.27	-52.0	0.82	0.635	0.301	0.33
-0.29	-51.5	0.814	0.628	0.292	0.308
-0.31	-51.0	0.808	0.621	0.284	0.287
-0.33	-50.5	0.801	0.613	0.274	0.262
-0.36	-50.0	0.794	0.606	0.265	0.237
-0.39	-49.5	0.785	0.596	0.253	0.209
-0.08	-49.0	0.778	0.587	0.243	0.181
-0.09	-48.5	0.767	0.576	0.229	0.148
-0.10	-48.0	0.759	0.566	0.217	0.116
-0.11	-47.5	0.747	0.553	0.202	0.08
-0.12	-47.0	0.736	0.541	0.187	0.043
-0.13	-46.5	0.723	0.527	0.171	0.003
-0.14	-46.0	0.71	0.513	0.154	-0.038
-0.15	-45.5	0.695	0.497	0.135	-0.083
-0.17	-45.0	0.679	0.48	0.116	-0.13
-0.18	-44.5	0.662	0.462	0.095	-0.18
-0.20	-44.0	0.643	0.442	0.073	-0.233
-0.21	-43.5	0.625	0.422	0.05	-0.288
-0.23	-43.0	0.603	0.398	0.024	-0.348
-0.24	-42.5	0.58	0.374	-0.003	-0.411
-0.27	-42.0	0.555	0.348	-0.032	-0.477
-0.29	-41.5	0.528	0.32	-0.063	-0.547
-0.31	-41.0	0.499	0.29	-0.096	-0.622
-0.33	-40.5	0.468	0.258	-0.131	-0.699
-0.36	-40.0	0.434	0.223	-0.169	-0.783
-0.39	-39.5	0.398	0.186	-0.209	-0.871
-0.42	-39.0	0.361	0.147	-0.251	-0.962
-0.45	-38.5	0.318	0.103	-0.298	-1.063
-0.49	-38.0	0.273	0.057	-0.347	-1.167
-0.52	-37.5	0.227	0.01	-0.397	-1.275
-0.56	-37.0	0.175	-0.042	-0.452	-1.394
-0.60	-36.5	0.122	-0.097	-0.509	-1.516
-0.65	-36.0	0.064	-0.155	-0.57	-1.648
-0.69	-35.5	0.004	-0.217	-0.634	-1.786
-0.74	-35.0	-0.06	-0.281	-0.701	-1.931
-0.79	-34.5	-0.128	-0.35	-0.772	-2.087
-0.84	-34.0	-0.201	-0.423	-0.848	-2.254
-0.90	-33.5	-0.277	-0.5	-0.927	-2.431
-0.96	-33.0	-0.359	-0.582	-1.012	-2.624
-1.02	-32.5	-0.443	-0.666	-1.097	-2.824
-1.09	-32.0	-0.532	-0.755	-1.187	-3.052
-1.15	-31.5	-0.62	-0.843	-1.274	-3.289
-1.22	-31.0	-0.719	-0.941	-1.372	-3.564
-1.29	-30.5	-0.825	-1.048	-1.484	-3.857

10m範囲の相対沈下量	沈下量(cm)				
	位置 X(m)	交通荷重	盛土終了	掘削	既往道路
	-30.0	-0.931	-1.154	-1.592	-4.162
-1.45	-29.5	-1.05	-1.273	-1.711	-4.564
-1.54	-29.0	-1.175	-1.397	-1.836	-5.014
-1.63	-28.5	-1.312	-1.534	-1.972	-5.548
-1.73	-28.0	-1.457	-1.678	-2.116	-6.099
-1.85	-27.5	-1.62	-1.839	-2.276	-6.608
-1.94	-27.0	-1.768	-1.986	-2.423	-7.08
-2.06	-26.5	-1.942	-2.157	-2.591	-7.502
-2.14	-26.0	-2.078	-2.291	-2.787	-7.909
-2.27	-25.5	-2.263	-2.474	-2.88	-8.243
-2.34	-25.0	-2.399	-2.637	-3.064	-8.566
-2.47	-24.5	-2.595	-2.766	-3.191	-8.852
-2.56	-24.0	-2.736	-2.938	-3.359	-9.107
-2.56	-23.5	-2.84	-3.039	-3.458	-9.328
-2.62	-23.0	-2.98	-3.175	-3.586	-9.512
-2.59	-22.5	-3.033	-3.224	-3.632	-9.661
-2.65	-22.0	-3.179	-3.365	-3.767	-9.788
-2.59	-21.5	-3.214	-3.394	-3.786	-9.876
-2.56	-21.0	-3.279	-3.454	-3.888	-9.926
-2.55	-20.5	-3.372	-3.541	-3.896	-9.946
-2.51	-20.0	-3.444	-3.576	-3.974	-9.935
-2.45	-19.5	-3.498	-3.653	-3.975	-9.889
-2.35	-19.0	-3.522	-3.669	-3.995	-9.813
-2.27	-18.5	-3.578	-3.657	-3.988	-9.701
-2.12	-18.0	-3.531	-3.661	-3.98	-9.552
-1.96	-17.5	-3.573	-3.692	-3.993	-9.364
-1.81	-17.0	-3.545	-3.654	-3.997	-9.156
-1.64	-16.5	-3.57	-3.669	-3.937	-8.897
-1.52	-16.0	-3.594	-3.68	-3.928	-8.607
-1.36	-15.5	-3.621	-3.694	-3.922	-8.259
-1.27	-15.0	-3.671	-3.73	-3.935	-7.864
-1.10	-14.5	-3.699	-3.751	-3.933	-7.382
-1.02	-14.0	-3.751	-3.779	-3.936	-6.957
-0.97	-13.5	-3.806	-3.819	-3.949	-6.559
-0.94	-13.0	-3.923	-3.917	-4.017	-6.317
-1.03	-12.5	-4.058	-4.034	-4.103	-6.128
-1.03	-12.0	-4.213	-4.169	-4.209	-5.994
-1.19	-11.5	-4.403	-4.338	-4.342	-5.912
-1.35	-11.0	-4.625	-4.535	-4.501	-5.871
-1.55	-10.5	-4.926	-4.814	-4.751	-5.929
-1.88	-10.0	-5.328	-5.187	-5.068	-6.069
-2.22	-9.5	-5.719	-5.543	-5.362	-6.184
-2.58	-9.0	-6.1	-5.888	-5.64	-6.28
-2.94	-8.5	-6.468	-6.218	-5.902	-6.352
-3.29	-8.0	-6.817	-6.529	-6.145	-6.399
-3.60	-7.5	-7.146	-6.818	-6.365	-6.42
-3.90	-7.0	-7.447	-7.077	-6.554	-6.417
-4.16	-6.5	-7.73	-7.318	-6.722	-6.403
-4.36	-6.0	-7.957	-7.499	-6.824	-6.36
-4.55	-5.5	-8.167	-7.66	-6.903	-6.307
-4.68	-5.0	-8.349	-7.789	-6.945	-6.239
-4.81	-4.5	-8.508	-7.89	-6.95	-6.155
-4.90	-4.0	-8.655	-7.976	-6.937	-6.064
-4.97	-3.5	-8.78	-8.033	-6.885	-5.956
-4.97	-3.0	-8.888	-8.067	-6.8	-5.833
-4.93	-2.5	-8.987	-8.084	-6.689	-5.699
-4.86	-2.0	-9.074	-8.079	-6.544	-5.549
-4.74	-1.5	-9.147	-8.051	-6.363	-5.381
-4.59	-1.0	-9.211	-7.999	-6.141	-5.196
-4.34	-0.5	-9.264	-7.922	-5.874	-4.986

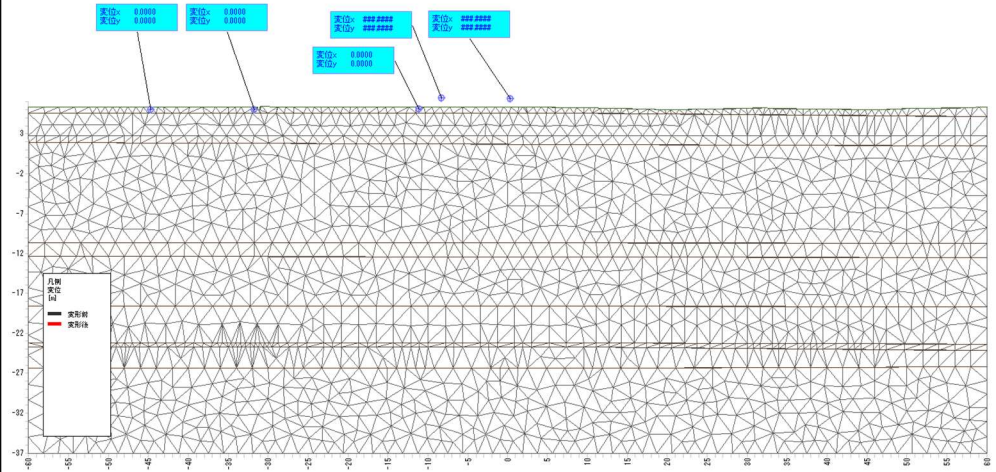
10m範囲の相対沈下量	位置 X(m)	沈下量 (cm)			
		交通荷重	盛土終了	掘削	既往道路
-3.98	0.0	-9.311	-7.823	-5.565	-4.75
-3.65	0.5	-9.364	-7.715	-5.223	-4.487
-3.32	1.0	-9.416	-7.608	-4.858	-4.191
-3.00	1.5	-9.468	-7.513	-4.474	-3.862
-2.71	2.0	-9.531	-7.444	-4.063	-3.492
-2.45	2.5	-9.599	-7.398	-3.653	-3.115
-2.21	3.0	-9.655	-7.355	-3.305	-2.806
-1.98	3.5	-9.711	-7.317	-3.03	-2.558
-1.81	4.0	-9.766	-7.285	-2.797	-2.346
-1.66	4.5	-9.822	-7.258	-2.59	-2.157
-1.53	5.0	-9.877	-7.237	-2.405	-1.988
-1.42	5.5	-9.931	-7.221	-2.236	-1.833
-1.33	6.0	-9.986	-7.209	-2.081	-1.691
-1.26	6.5	-10.039	-7.202	-1.94	-1.562
-1.21	7.0	-10.093	-7.198	-1.81	-1.443
-1.16	7.5	-10.145	-7.197	-1.687	-1.331
-1.12	8.0	-10.196	-7.199	-1.573	-1.227
-1.10	8.5	-10.247	-7.203	-1.466	-1.129
-1.09	9.0	-10.297	-7.209	-1.365	-1.037
-1.08	9.5	-10.346	-7.217	-1.27	-0.951
-1.08	10.0	-10.393	-7.227	-1.182	-0.87
-1.08	10.5	-10.44	-7.238	-1.097	-0.794
-1.07	11.0	-10.486	-7.25	-1.017	-0.721
-1.06	11.5	-10.531	-7.264	-0.941	-0.653
-1.04	12.0	-10.574	-7.278	-0.87	-0.59
-1.02	12.5	-10.617	-7.292	-0.802	-0.529
-1.00	13.0	-10.658	-7.307	-0.738	-0.472
-0.99	13.5	-10.697	-7.322	-0.678	-0.418
-0.97	14.0	-10.736	-7.337	-0.621	-0.367
-0.95	14.5	-10.773	-7.352	-0.567	-0.32
-0.93	15.0	-10.808	-7.367	-0.516	-0.275
-0.91	15.5	-10.841	-7.382	-0.468	-0.233
-0.89	16.0	-10.873	-7.396	-0.422	-0.193
-0.87	16.5	-10.904	-7.409	-0.379	-0.155
-0.84	17.0	-10.932	-7.422	-0.338	-0.119
-0.81	17.5	-10.958	-7.433	-0.3	-0.087
-0.79	18.0	-10.983	-7.444	-0.264	-0.055
-0.76	18.5	-11.005	-7.453	-0.229	-0.025
-0.73	19.0	-11.026	-7.462	-0.197	0.002
-0.70	19.5	-11.044	-7.468	-0.166	0.029
-0.67	20.0	-11.06	-7.474	-0.137	0.053
-0.64	20.5	-11.075	-7.477	-0.11	0.076
-0.60	21.0	-11.087	-7.48	-0.085	0.097
-0.57	21.5	-11.098	-7.481	-0.062	0.116
-0.53	22.0	-11.106	-7.481	-0.039	0.135
-0.50	22.5	-11.113	-7.479	-0.018	0.152
-0.46	23.0	-11.118	-7.476	0.002	0.169
-0.42	23.5	-11.121	-7.472	0.02	0.184
-0.39	24.0	-11.123	-7.467	0.038	0.198
-0.35	24.5	-11.123	-7.461	0.055	0.212
-0.32	25.0	-11.122	-7.454	0.07	0.224
-0.28	25.5	-11.12	-7.446	0.085	0.236
-0.25	26.0	-11.117	-7.438	0.099	0.247
-0.22	26.5	-11.113	-7.43	0.112	0.257
-0.19	27.0	-11.109	-7.421	0.124	0.266
-0.16	27.5	-11.104	-7.412	0.136	0.275
-0.14	28.0	-11.099	-7.404	0.147	0.283
-0.12	28.5	-11.094	-7.395	0.157	0.29
-0.10	29.0	-11.089	-7.387	0.166	0.297
-0.08	29.5	-11.084	-7.38	0.175	0.303

10m範囲の相対沈下量	位置 X(m)	沈下量 (cm)			
		交通荷重	盛土終了	掘削	既往道路
-0.06	30.0	-11.08	-7.373	0.183	0.308
-0.05	30.5	-11.076	-7.368	0.191	0.313
-0.05	31.0	-11.073	-7.364	0.198	0.318
-0.05	31.5	-11.071	-7.361	0.204	0.322
-0.05	32.0	-11.069	-7.359	0.21	0.326
-0.06	32.5	-11.067	-7.357	0.216	0.329
-0.06	33.0	-11.065	-7.357	0.221	0.332
-0.06	33.5	-11.065	-7.358	0.226	0.335
-0.06	34.0	-11.065	-7.36	0.23	0.337
-0.06	34.5	-11.066	-7.362	0.234	0.339
-0.06	35.0	-11.067	-7.365	0.238	0.34
-0.05	35.5	-11.068	-7.368	0.241	0.341
-0.05	36.0	-11.069	-7.371	0.244	0.342
-0.05	36.5	-11.07	-7.374	0.247	0.343
-0.04	37.0	-11.071	-7.377	0.25	0.344
-0.04	37.5	-11.072	-7.38	0.252	0.344
-0.03	38.0	-11.072	-7.382	0.254	0.344
-0.03	38.5	-11.072	-7.384	0.255	0.344
-0.02	39.0	-11.071	-7.386	0.257	0.344
-0.02	39.5	-11.07	-7.387	0.258	0.343
-0.02	40.0	-11.067	-7.387	0.259	0.343
-0.01	40.5	-11.065	-7.387	0.26	0.342
-0.01	41.0	-11.061	-7.386	0.26	0.341
-0.02	41.5	-11.056	-7.384	0.261	0.341
-0.02	42.0	-11.051	-7.381	0.261	0.34
-0.03	42.5	-11.044	-7.377	0.262	0.339
-0.04	43.0	-11.036	-7.371	0.262	0.337
-0.04	43.5	-11.027	-7.364	0.262	0.336
-0.06	44.0	-11.016	-7.356	0.262	0.335
-0.07	44.5	-11.004	-7.347	0.262	0.334
-0.08	45.0	-10.991	-7.335	0.262	0.332
-0.09	45.5	-10.977	-7.323	0.261	0.331
-0.11	46.0	-10.961	-7.309	0.261	0.33
-0.13	46.5	-10.944	-7.293	0.261	0.328
-0.15	47.0	-10.927	-7.277	0.261	0.328
-0.16	47.5	-10.909	-7.259	0.261	0.327
-0.18	48.0	-10.89	-7.24	0.261	0.326
-0.20	48.5	-10.87	-7.22	0.26	0.325
-0.22	49.0	-10.849	-7.199	0.26	0.325
-0.24	49.5	-10.828	-7.178	0.26	0.324
-0.26	50.0	-10.807	-7.156	0.26	0.323
-0.28	50.5	-10.785	-7.135	0.26	0.322
-0.30	51.0	-10.763	-7.113	0.259	0.321
-0.32	51.5	-10.741	-7.091	0.259	0.321
-0.33	52.0	-10.72	-7.07	0.258	0.32
-0.35	52.5	-10.699	-7.049	0.258	0.319
-0.36	53.0	-10.678	-7.029	0.258	0.318
-0.37	53.5	-10.658	-7.01	0.257	0.317
-0.38	54.0	-10.639	-6.991	0.257	0.316
-0.38	54.5	-10.621	-6.973	0.257	0.316
-0.39	55.0	-10.604	-6.956	0.256	0.315
-0.39	55.5	-10.587	-6.94	0.256	0.315
-0.39	56.0	-10.572	-6.925	0.256	0.314
-0.39	56.5	-10.558	-6.91	0.256	0.314
-0.38	57.0	-10.546	-6.897	0.256	0.314
-0.37	57.5	-10.535	-6.885	0.256	0.313
-0.36	58.0	-10.526	-6.875	0.256	0.313
-0.35	58.5	-10.52	-6.867	0.256	0.314
-0.33	59.0	-10.518	-6.862	0.257	0.315
-0.31	59.5	-10.514	-6.857	0.257	0.315
-0.30	60.0	-10.512	-6.856	0.257	0.315

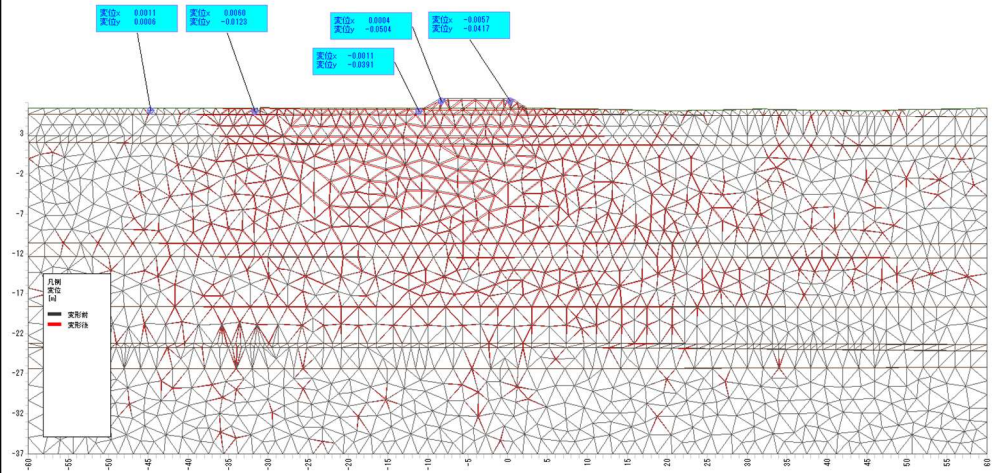


# メッシュ変位図

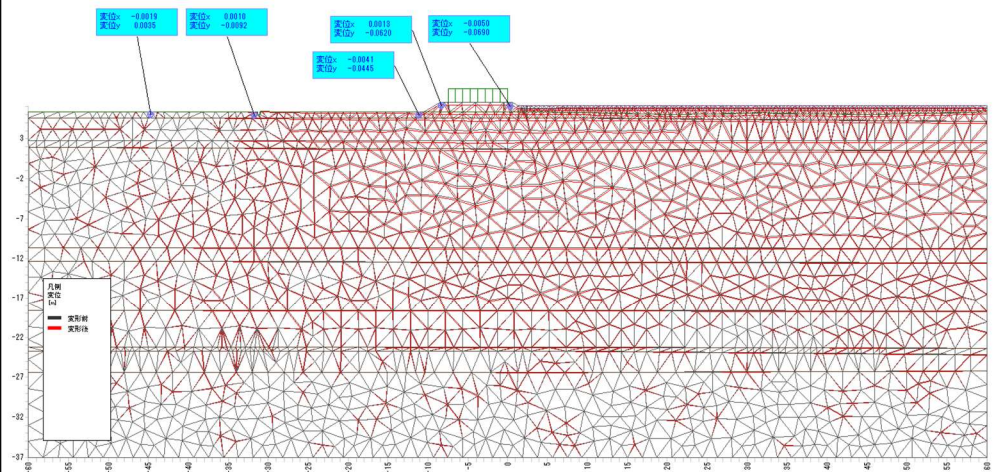
現地形



掘削



造成後



供用  
(交通荷重)

