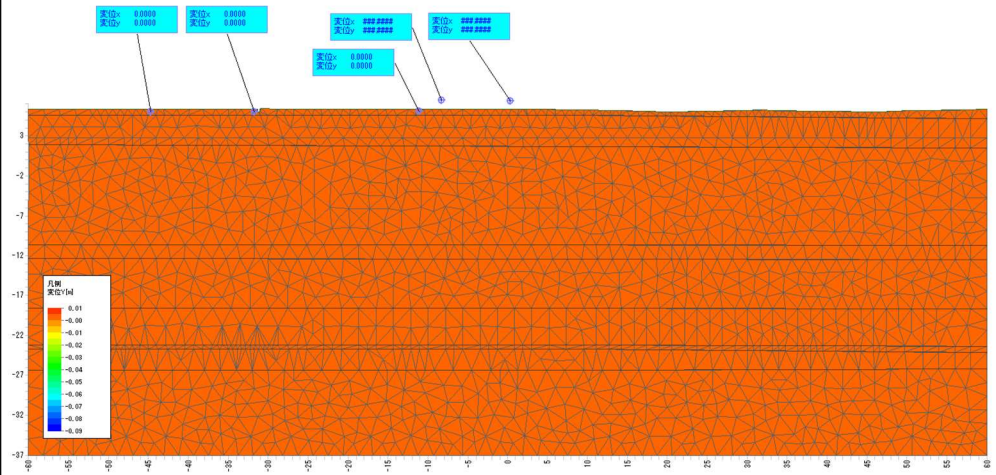
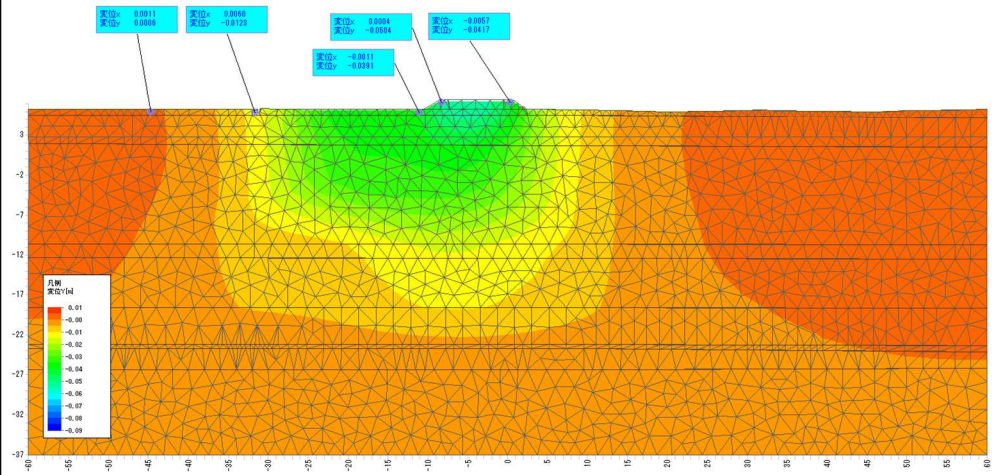


Y変位図

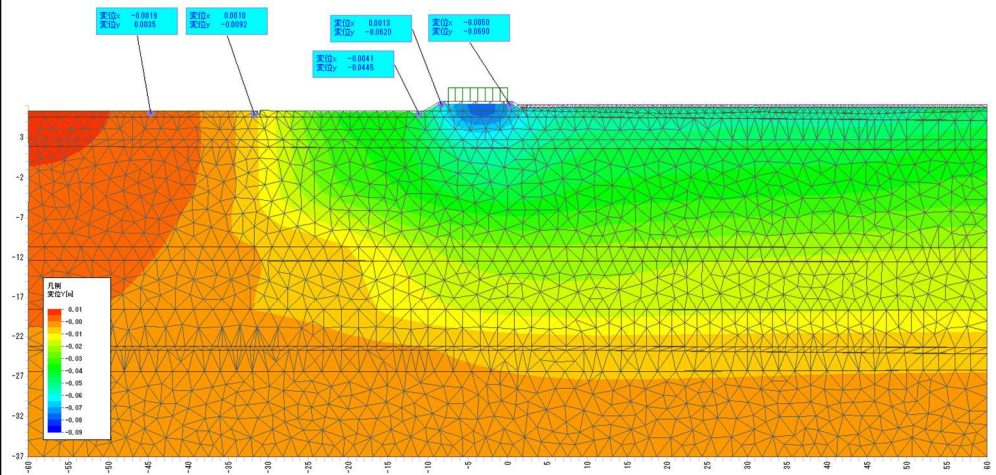
現地形



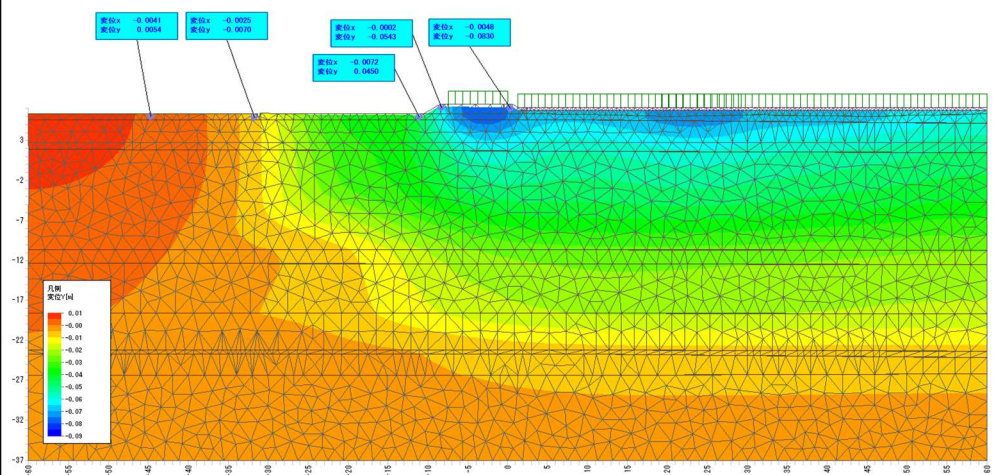
掘削



造成後

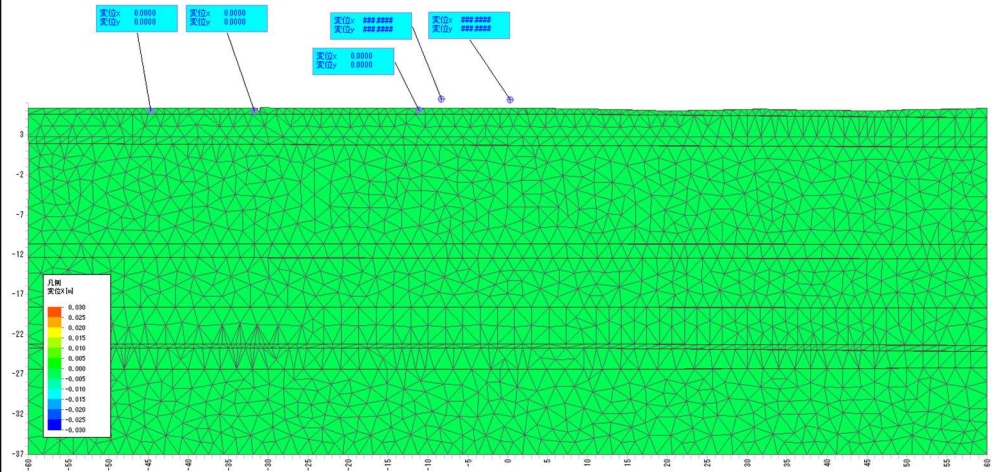


供用
(交通荷重)

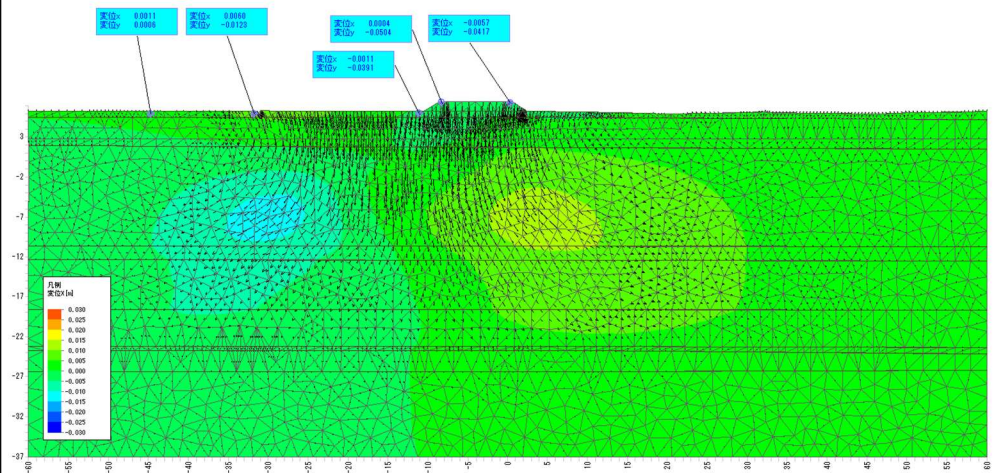


X変位図

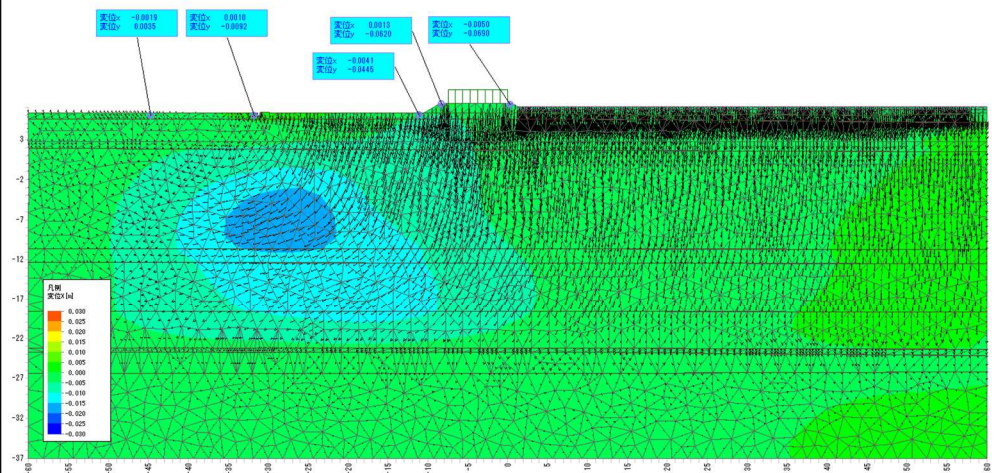
現地形



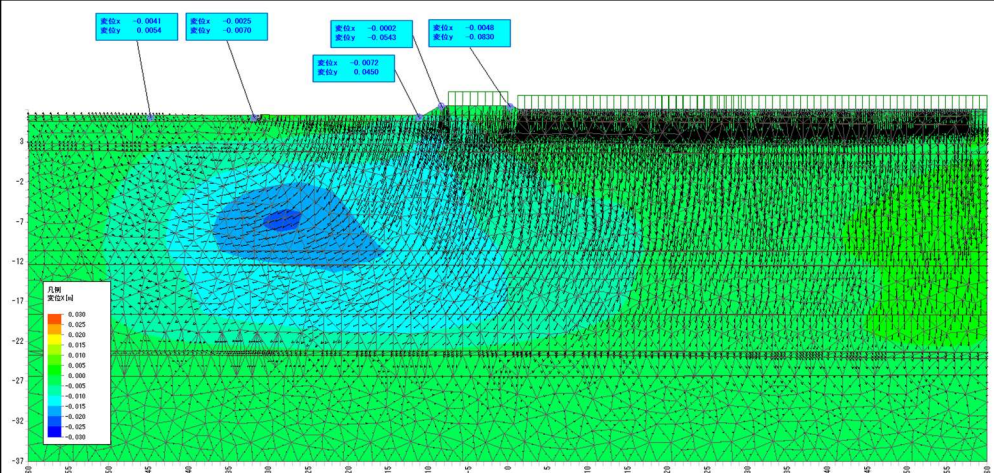
掘削



造成後

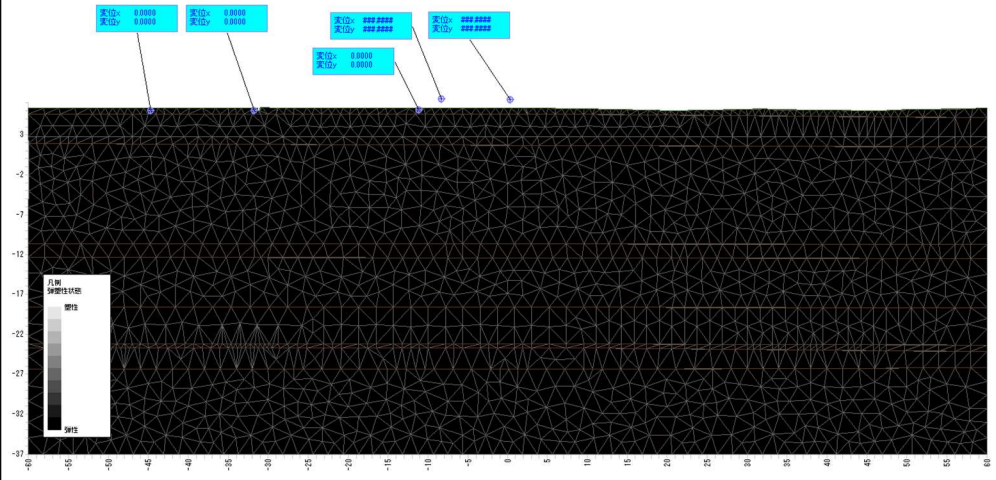


供用
(交通荷重)

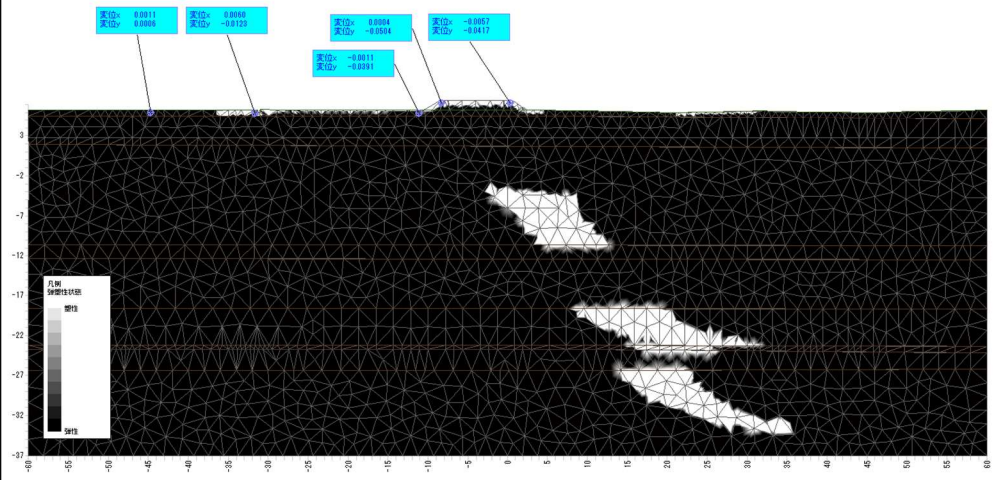


弾塑性図

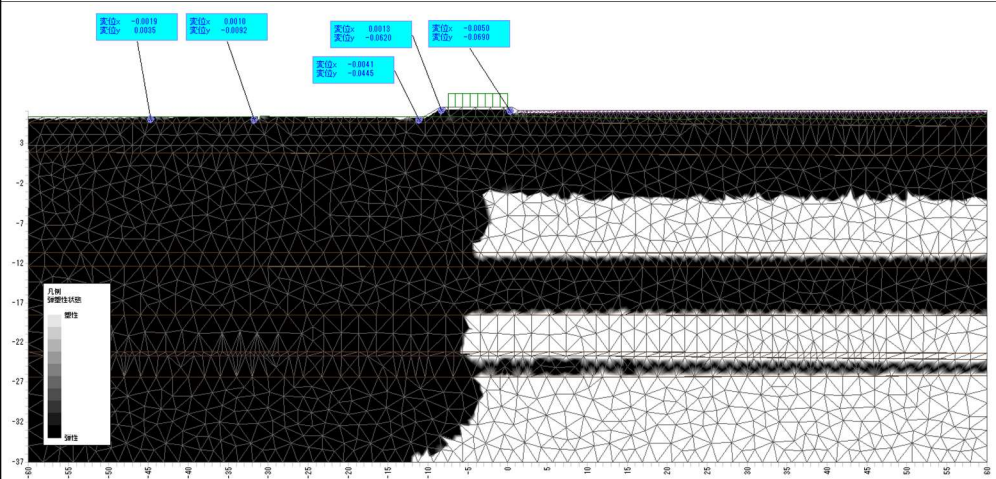
現地形



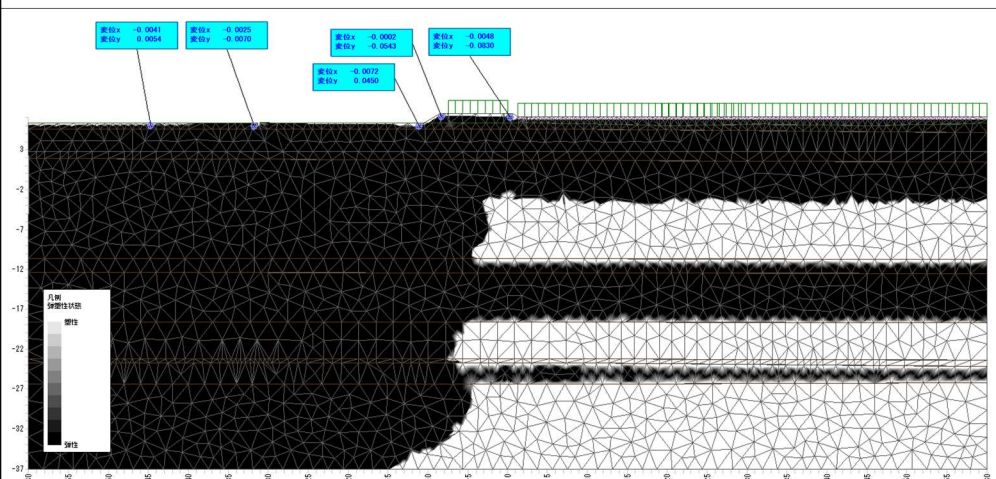
掘削

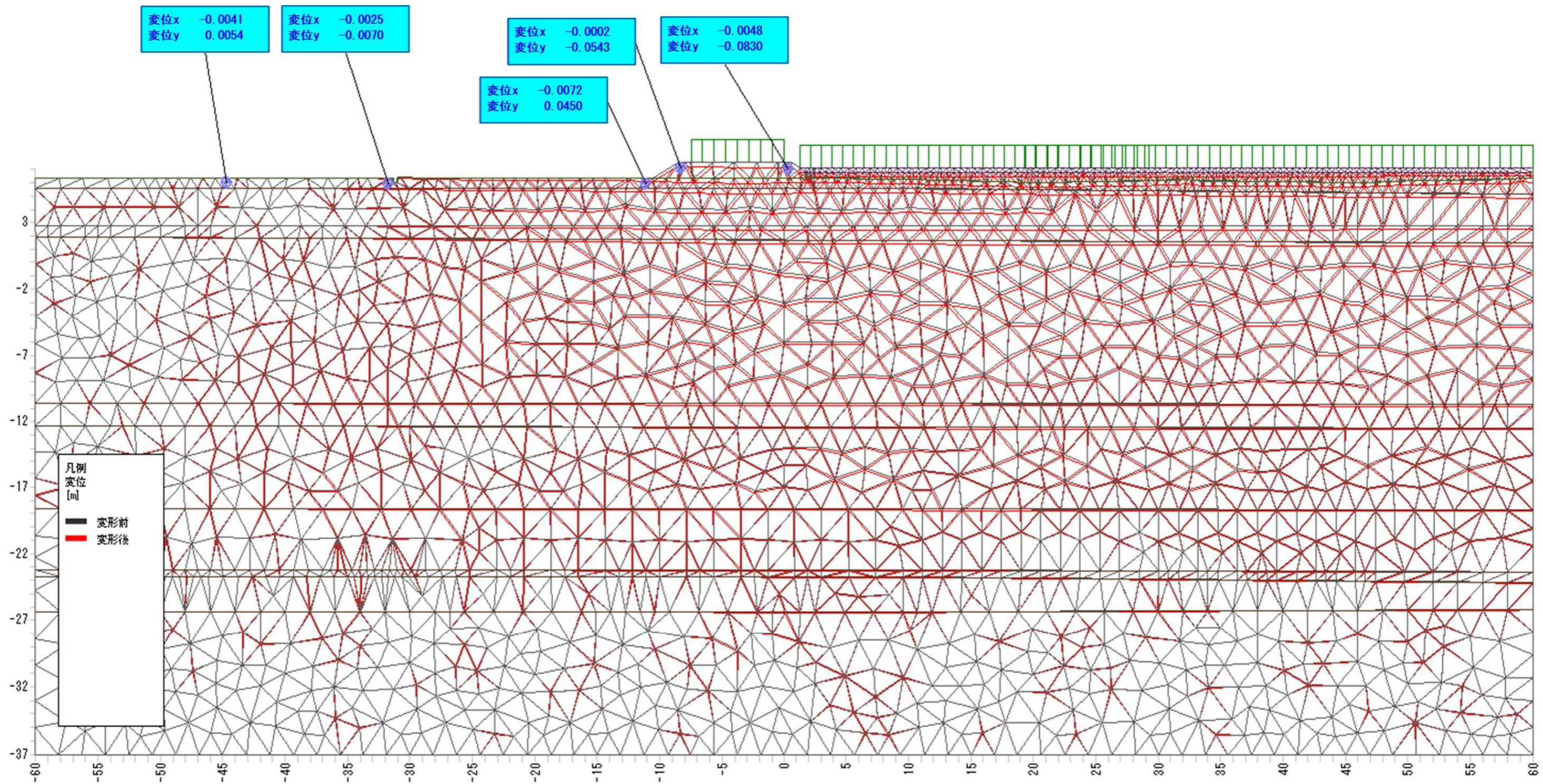


造成後

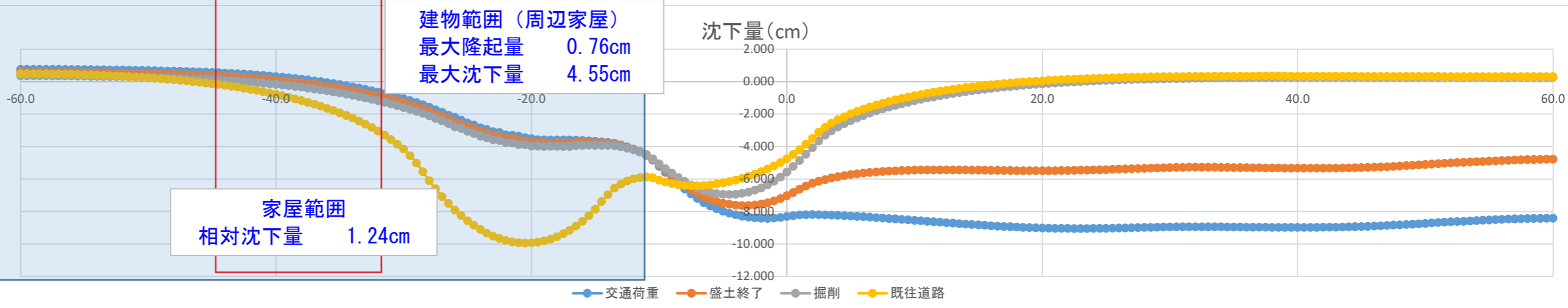
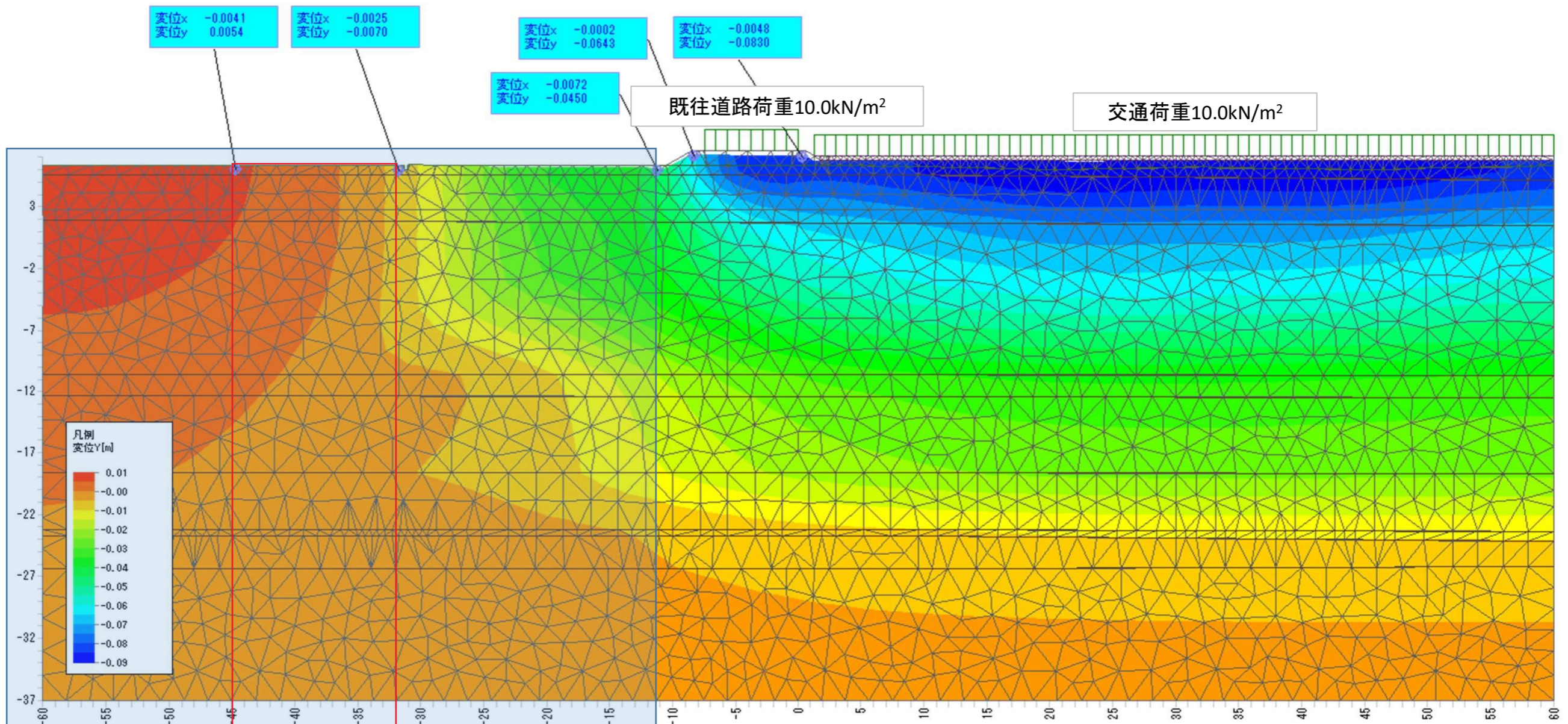


供用
(交通荷重)





D-D' 断面
GH=7.10m



10m範囲の相対沈下量	沈下量 (cm)				
	位置 X(m)	交通荷重	盛土終了	掘削	既往道路
	-60.0	0.754	0.584	0.359	0.482
-0.08	-59.5	0.755	0.584	0.359	0.482
-0.09	-59.0	0.755	0.584	0.358	0.480
-0.10	-58.5	0.753	0.583	0.357	0.477
-0.11	-58.0	0.752	0.581	0.355	0.473
-0.12	-57.5	0.751	0.580	0.354	0.468
-0.13	-57.0	0.749	0.578	0.351	0.462
-0.14	-56.5	0.747	0.575	0.348	0.454
-0.15	-56.0	0.744	0.572	0.345	0.445
-0.16	-55.5	0.742	0.570	0.341	0.436
-0.18	-55.0	0.739	0.566	0.337	0.424
-0.19	-54.5	0.735	0.561	0.332	0.412
-0.21	-54.0	0.731	0.557	0.327	0.398
-0.22	-53.5	0.727	0.553	0.321	0.383
-0.24	-53.0	0.722	0.547	0.315	0.366
-0.26	-52.5	0.716	0.541	0.307	0.348
-0.28	-52.0	0.712	0.535	0.301	0.330
-0.30	-51.5	0.705	0.528	0.292	0.308
-0.32	-51.0	0.699	0.521	0.284	0.287
-0.34	-50.5	0.691	0.512	0.274	0.262
-0.37	-50.0	0.684	0.504	0.265	0.237
-0.40	-49.5	0.674	0.494	0.253	0.209
-0.09	-49.0	0.667	0.485	0.243	0.181
-0.10	-48.5	0.656	0.473	0.229	0.148
-0.11	-48.0	0.646	0.462	0.217	0.116
-0.12	-47.5	0.634	0.449	0.202	0.080
-0.13	-47.0	0.622	0.436	0.187	0.043
-0.14	-46.5	0.609	0.422	0.171	0.003
-0.15	-46.0	0.595	0.407	0.154	-0.038
-0.16	-45.5	0.579	0.390	0.136	-0.083
-0.18	-45.0	0.563	0.373	0.116	-0.130
-0.19	-44.5	0.545	0.354	0.095	-0.180
-0.21	-44.0	0.526	0.333	0.073	-0.233
-0.22	-43.5	0.507	0.313	0.050	-0.288
-0.24	-43.0	0.484	0.288	0.024	-0.348
-0.26	-42.5	0.461	0.264	-0.003	-0.411
-0.28	-42.0	0.435	0.237	-0.032	-0.477
-0.30	-41.5	0.408	0.208	-0.063	-0.547
-0.32	-41.0	0.378	0.177	-0.096	-0.622
-0.34	-40.5	0.347	0.145	-0.131	-0.699
-0.37	-40.0	0.312	0.109	-0.169	-0.783
-0.40	-39.5	0.275	0.071	-0.209	-0.871
-0.43	-39.0	0.238	0.032	-0.250	-0.962
-0.46	-38.5	0.194	-0.013	-0.297	-1.063
-0.50	-38.0	0.149	-0.059	-0.346	-1.167
-0.53	-37.5	0.102	-0.107	-0.396	-1.275
-0.57	-37.0	0.050	-0.160	-0.451	-1.394
-0.61	-36.5	-0.004	-0.215	-0.508	-1.516
-0.66	-36.0	-0.062	-0.274	-0.569	-1.648
-0.70	-35.5	-0.123	-0.336	-0.633	-1.786
-0.75	-35.0	-0.187	-0.401	-0.700	-1.931
-0.80	-34.5	-0.255	-0.470	-0.771	-2.087
-0.85	-34.0	-0.328	-0.544	-0.847	-2.254
-0.91	-33.5	-0.404	-0.621	-0.926	-2.431
-0.97	-33.0	-0.486	-0.704	-1.010	-2.624
-1.03	-32.5	-0.569	-0.787	-1.095	-2.824
-1.09	-32.0	-0.658	-0.876	-1.185	-3.052
-1.15	-31.5	-0.746	-0.963	-1.272	-3.289
-1.22	-31.0	-0.844	-1.060	-1.369	-3.564
-1.30	-30.5	-0.950	-1.169	-1.481	-3.857

10m範囲の相対沈下量	沈下量 (cm)				
	位置 X(m)	交通荷重	盛土終了	掘削	既往道路
	-30.0	-1.055	-1.274	-1.588	-4.162
-1.45	-29.5	-1.173	-1.392	-1.707	-4.564
-1.54	-29.0	-1.297	-1.515	-1.831	-5.015
-1.63	-28.5	-1.431	-1.649	-1.965	-5.549
-1.72	-28.0	-1.575	-1.792	-2.108	-6.099
-1.84	-27.5	-1.737	-1.954	-2.269	-6.608
-1.94	-27.0	-1.885	-2.093	-2.416	-7.079
-2.05	-26.5	-2.058	-2.272	-2.586	-7.502
-2.13	-26.0	-2.194	-2.469	-2.782	-7.908
-2.26	-25.5	-2.378	-2.589	-2.876	-8.243
-2.36	-25.0	-2.543	-2.750	-3.061	-8.566
-2.42	-24.5	-2.672	-2.878	-3.188	-8.852
-2.52	-24.0	-2.845	-3.048	-3.355	-9.106
-2.54	-23.5	-2.948	-3.149	-3.454	-9.328
-2.60	-23.0	-3.085	-3.282	-3.583	-9.512
-2.57	-22.5	-3.135	-3.329	-3.629	-9.661
-2.62	-22.0	-3.278	-3.468	-3.764	-9.788
-2.55	-21.5	-3.299	-3.494	-3.783	-9.876
-2.53	-21.0	-3.371	-3.598	-3.884	-9.926
-2.51	-20.5	-3.460	-3.634	-3.893	-9.946
-2.44	-20.0	-3.497	-3.697	-3.971	-9.935
-2.40	-19.5	-3.577	-3.739	-3.972	-9.889
-2.30	-19.0	-3.596	-3.752	-3.992	-9.813
-2.17	-18.5	-3.587	-3.794	-3.985	-9.701
-2.02	-18.0	-3.593	-3.734	-3.976	-9.551
-1.86	-17.5	-3.589	-3.758	-3.989	-9.363
-1.71	-17.0	-3.593	-3.771	-3.993	-9.155
-1.54	-16.5	-3.597	-3.723	-3.932	-8.896
-1.43	-16.0	-3.626	-3.726	-3.922	-8.606
-1.27	-15.5	-3.644	-3.732	-3.915	-8.259
-1.14	-15.0	-3.683	-3.759	-3.926	-7.864
-1.04	-14.5	-3.711	-3.774	-3.926	-7.384
-0.90	-14.0	-3.747	-3.795	-3.930	-6.958
-0.85	-13.5	-3.793	-3.827	-3.945	-6.559
-0.81	-13.0	-3.899	-3.916	-4.013	-6.317
-0.89	-12.5	-4.023	-4.023	-4.100	-6.128
-0.89	-12.0	-4.166	-4.149	-4.206	-5.994
-1.04	-11.5	-4.343	-4.306	-4.340	-5.912
-1.18	-11.0	-4.550	-4.491	-4.498	-5.871
-1.38	-10.5	-4.837	-4.759	-4.749	-5.929
-1.72	-10.0	-5.221	-5.115	-5.066	-6.069
-2.01	-9.5	-5.589	-5.451	-5.360	-6.184
-2.36	-9.0	-5.948	-5.776	-5.638	-6.280
-2.71	-8.5	-6.292	-6.084	-5.900	-6.352
-3.03	-8.0	-6.617	-6.374	-6.144	-6.399
-3.33	-7.5	-6.921	-6.641	-6.364	-6.420
-3.60	-7.0	-7.195	-6.878	-6.553	-6.417
-3.86	-6.5	-7.452	-7.095	-6.721	-6.403
-4.02	-6.0	-7.649	-7.251	-6.823	-6.360
-4.18	-5.5	-7.828	-7.385	-6.902	-6.307
-4.29	-5.0	-7.977	-7.486	-6.944	-6.239
-4.39	-4.5	-8.098	-7.556	-6.949	-6.155
-4.46	-4.0	-8.205	-7.610	-6.937	-6.064
-4.49	-3.5	-8.286	-7.631	-6.884	-5.956
-4.45	-3.0	-8.346	-7.626	-6.800	-5.833
-4.37	-2.5	-8.391	-7.599	-6.688	-5.699
-4.25	-2.0	-8.416	-7.547	-6.544	-5.549
-4.08	-1.5	-8.421	-7.466	-6.362	-5.382
-3.87	-1.0	-8.405	-7.355	-6.141	-5.196
-3.58	-0.5	-8.367	-7.208	-5.874	-4.986

10m範囲の相 対沈下量	位置 X(m)	沈下量 (cm)			
		交通荷重	盛土終了	掘削	既往道路
-3.20	0.0	-8.312	-7.029	-5.564	-4.750
-2.83	0.5	-8.252	-6.829	-5.222	-4.486
-2.47	1.0	-8.214	-6.627	-4.858	-4.191
-2.13	1.5	-8.195	-6.433	-4.475	-3.863
-1.80	2.0	-8.187	-6.264	-4.069	-3.498
-1.50	2.5	-8.195	-6.137	-3.646	-3.111
-1.23	3.0	-8.207	-6.031	-3.304	-2.805
-0.97	3.5	-8.221	-5.938	-3.029	-2.557
-0.77	4.0	-8.238	-5.857	-2.796	-2.346
-0.59	4.5	-8.257	-5.788	-2.590	-2.157
-0.44	5.0	-8.278	-5.727	-2.405	-1.988
-0.32	5.5	-8.301	-5.676	-2.236	-1.833
-0.23	6.0	-8.325	-5.632	-2.081	-1.691
-0.23	6.5	-8.350	-5.595	-1.940	-1.562
-0.23	7.0	-8.376	-5.563	-1.810	-1.443
-0.23	7.5	-8.403	-5.536	-1.687	-1.331
-0.24	8.0	-8.430	-5.513	-1.573	-1.227
-0.27	8.5	-8.458	-5.494	-1.466	-1.129
-0.30	9.0	-8.487	-5.478	-1.365	-1.037
-0.33	9.5	-8.516	-5.466	-1.270	-0.950
-0.36	10.0	-8.544	-5.456	-1.181	-0.869
-0.39	10.5	-8.574	-5.448	-1.096	-0.793
-0.42	11.0	-8.603	-5.443	-1.017	-0.721
-0.45	11.5	-8.632	-5.440	-0.941	-0.653
-0.47	12.0	-8.661	-5.438	-0.870	-0.589
-0.49	12.5	-8.690	-5.438	-0.802	-0.529
-0.51	13.0	-8.719	-5.440	-0.739	-0.472
-0.53	13.5	-8.747	-5.442	-0.678	-0.418
-0.54	14.0	-8.774	-5.446	-0.621	-0.367
-0.54	14.5	-8.801	-5.450	-0.567	-0.320
-0.55	15.0	-8.827	-5.454	-0.516	-0.275
-0.55	15.5	-8.853	-5.460	-0.468	-0.233
-0.55	16.0	-8.877	-5.465	-0.422	-0.193
-0.55	16.5	-8.900	-5.470	-0.379	-0.155
-0.55	17.0	-8.922	-5.476	-0.338	-0.119
-0.54	17.5	-8.942	-5.480	-0.300	-0.087
-0.53	18.0	-8.960	-5.484	-0.264	-0.055
-0.52	18.5	-8.977	-5.487	-0.229	-0.025
-0.51	19.0	-8.993	-5.490	-0.197	0.002
-0.49	19.5	-9.006	-5.491	-0.166	0.029
-0.47	20.0	-9.017	-5.490	-0.137	0.053
-0.45	20.5	-9.026	-5.489	-0.110	0.076
-0.43	21.0	-9.034	-5.486	-0.085	0.097
-0.41	21.5	-9.040	-5.481	-0.062	0.116
-0.38	22.0	-9.043	-5.475	-0.039	0.135
-0.36	22.5	-9.045	-5.468	-0.019	0.152
-0.33	23.0	-9.045	-5.459	0.002	0.169
-0.30	23.5	-9.044	-5.450	0.020	0.184
-0.27	24.0	-9.041	-5.440	0.038	0.198
-0.24	24.5	-9.037	-5.428	0.054	0.212
-0.22	25.0	-9.032	-5.417	0.070	0.224
-0.19	25.5	-9.026	-5.404	0.085	0.236
-0.17	26.0	-9.019	-5.392	0.099	0.247
-0.15	26.5	-9.011	-5.379	0.112	0.257
-0.12	27.0	-9.003	-5.366	0.124	0.266
-0.10	27.5	-8.995	-5.353	0.136	0.275
-0.08	28.0	-8.987	-5.340	0.146	0.283
-0.07	28.5	-8.979	-5.328	0.157	0.290
-0.07	29.0	-8.971	-5.317	0.166	0.297
-0.08	29.5	-8.964	-5.306	0.175	0.303

10m範囲の相 対沈下量	位置 X(m)	沈下量 (cm)			
		交通荷重	盛土終了	掘削	既往道路
-0.09	30.0	-8.958	-5.297	0.183	0.308
-0.09	30.5	-8.953	-5.289	0.191	0.314
-0.10	31.0	-8.950	-5.283	0.198	0.318
-0.10	31.5	-8.947	-5.279	0.204	0.322
-0.10	32.0	-8.946	-5.277	0.210	0.326
-0.10	32.5	-8.946	-5.277	0.216	0.329
-0.10	33.0	-8.946	-5.278	0.221	0.332
-0.10	33.5	-8.948	-5.281	0.226	0.335
-0.10	34.0	-8.951	-5.285	0.230	0.337
-0.09	34.5	-8.954	-5.289	0.234	0.339
-0.09	35.0	-8.958	-5.294	0.238	0.340
-0.08	35.5	-8.961	-5.299	0.241	0.341
-0.07	36.0	-8.965	-5.304	0.244	0.342
-0.06	36.5	-8.968	-5.309	0.247	0.343
-0.06	37.0	-8.972	-5.314	0.249	0.344
-0.05	37.5	-8.975	-5.318	0.252	0.344
-0.04	38.0	-8.977	-5.322	0.253	0.344
-0.03	38.5	-8.979	-5.326	0.255	0.344
-0.04	39.0	-8.981	-5.329	0.257	0.344
-0.04	39.5	-8.982	-5.332	0.258	0.343
-0.04	40.0	-8.982	-5.335	0.259	0.343
-0.04	40.5	-8.982	-5.336	0.260	0.342
-0.04	41.0	-8.980	-5.337	0.260	0.341
-0.04	41.5	-8.978	-5.337	0.261	0.341
-0.04	42.0	-8.975	-5.336	0.261	0.340
-0.04	42.5	-8.971	-5.334	0.262	0.339
-0.04	43.0	-8.965	-5.331	0.262	0.337
-0.03	43.5	-8.958	-5.326	0.262	0.336
-0.03	44.0	-8.949	-5.319	0.262	0.335
-0.04	44.5	-8.938	-5.311	0.262	0.334
-0.06	45.0	-8.926	-5.301	0.262	0.332
-0.07	45.5	-8.913	-5.288	0.261	0.331
-0.08	46.0	-8.897	-5.274	0.261	0.330
-0.10	46.5	-8.880	-5.258	0.261	0.328
-0.12	47.0	-8.862	-5.240	0.261	0.328
-0.14	47.5	-8.842	-5.220	0.260	0.327
-0.16	48.0	-8.822	-5.199	0.261	0.326
-0.18	48.5	-8.800	-5.176	0.260	0.325
-0.21	49.0	-8.777	-5.152	0.260	0.325
-0.23	49.5	-8.754	-5.128	0.260	0.324
-0.25	50.0	-8.731	-5.104	0.260	0.323
-0.27	50.5	-8.708	-5.080	0.260	0.322
-0.30	51.0	-8.684	-5.056	0.259	0.322
-0.32	51.5	-8.661	-5.033	0.259	0.320
-0.34	52.0	-8.639	-5.011	0.259	0.320
-0.35	52.5	-8.617	-4.990	0.258	0.319
-0.37	53.0	-8.597	-4.970	0.258	0.318
-0.38	53.5	-8.577	-4.951	0.257	0.317
-0.39	54.0	-8.558	-4.932	0.257	0.317
-0.40	54.5	-8.539	-4.914	0.257	0.316
-0.40	55.0	-8.522	-4.897	0.256	0.315
-0.41	55.5	-8.505	-4.880	0.256	0.315
-0.41	56.0	-8.488	-4.863	0.256	0.314
-0.41	56.5	-8.473	-4.847	0.256	0.314
-0.40	57.0	-8.459	-4.832	0.256	0.313
-0.40	57.5	-8.446	-4.817	0.255	0.313
-0.39	58.0	-8.435	-4.804	0.256	0.313
-0.37	58.5	-8.427	-4.792	0.256	0.314
-0.35	59.0	-8.423	-4.784	0.257	0.315
-0.34	59.5	-8.418	-4.778	0.257	0.315
-0.32	60.0	-8.416	-4.776	0.257	0.315