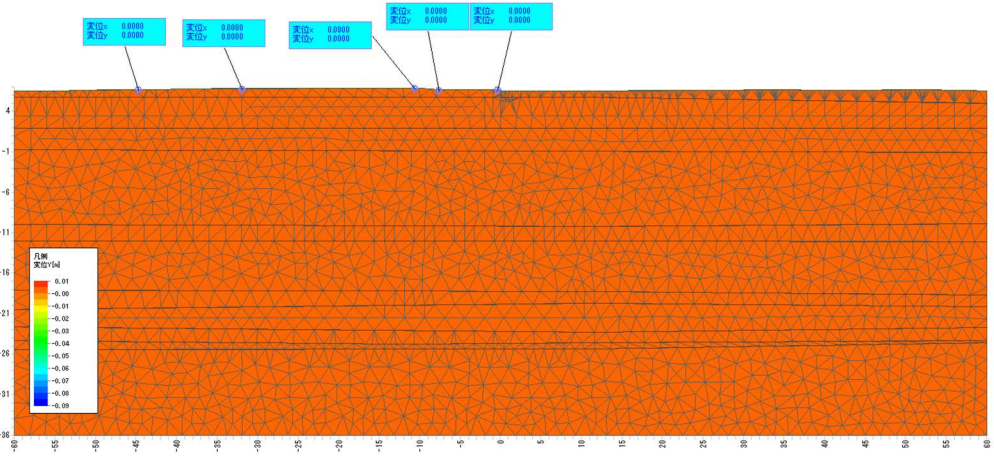
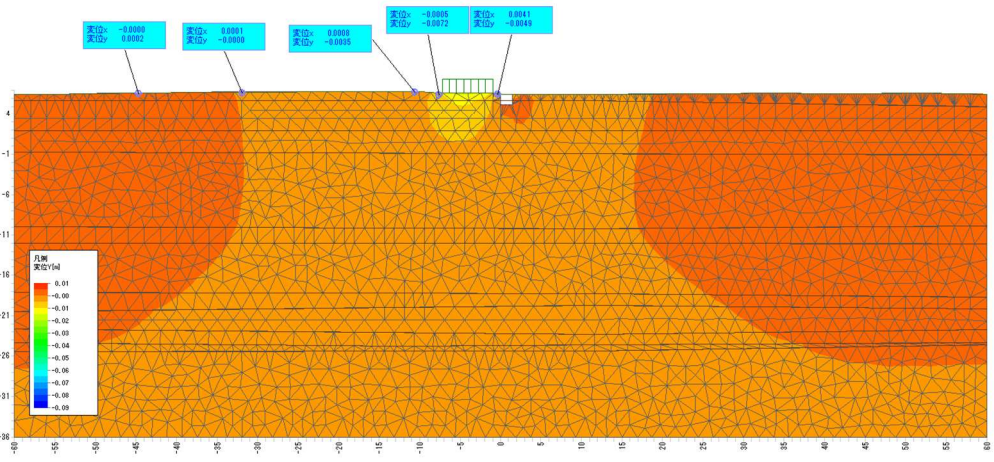


Y变位图

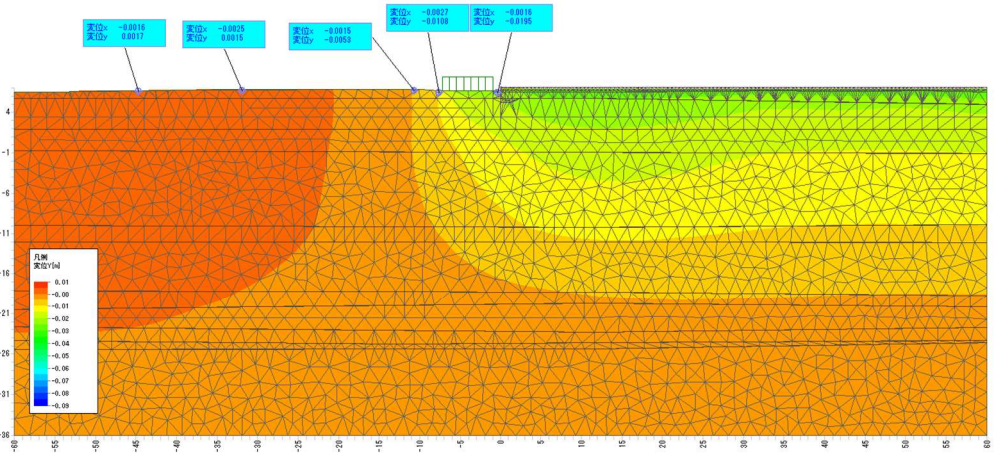
現地形



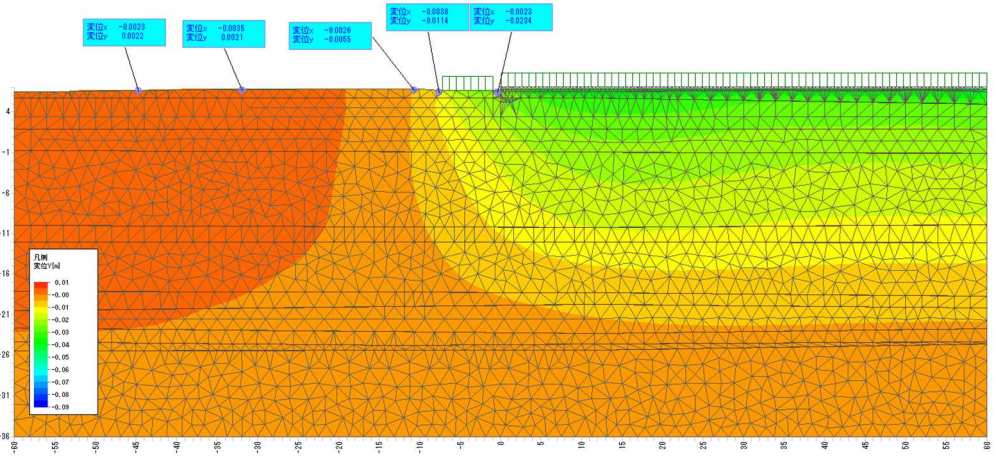
掘削



造成後

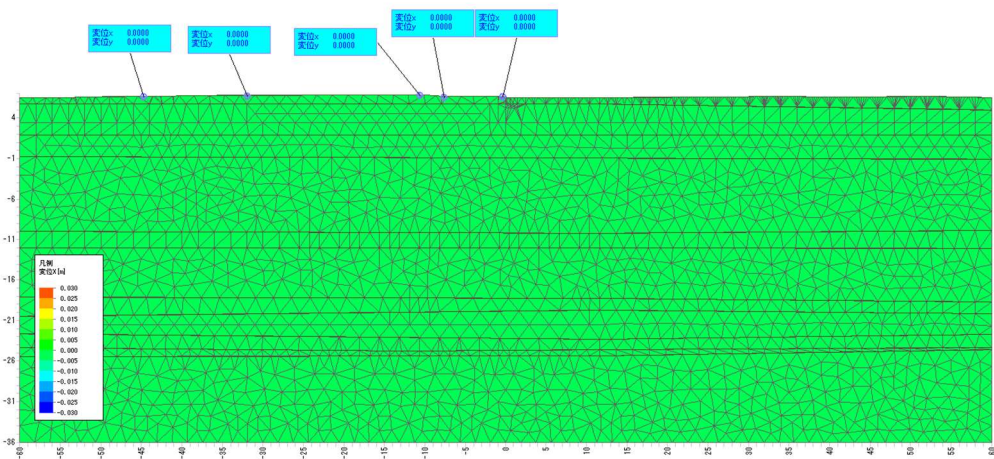


供用
(交通荷重)

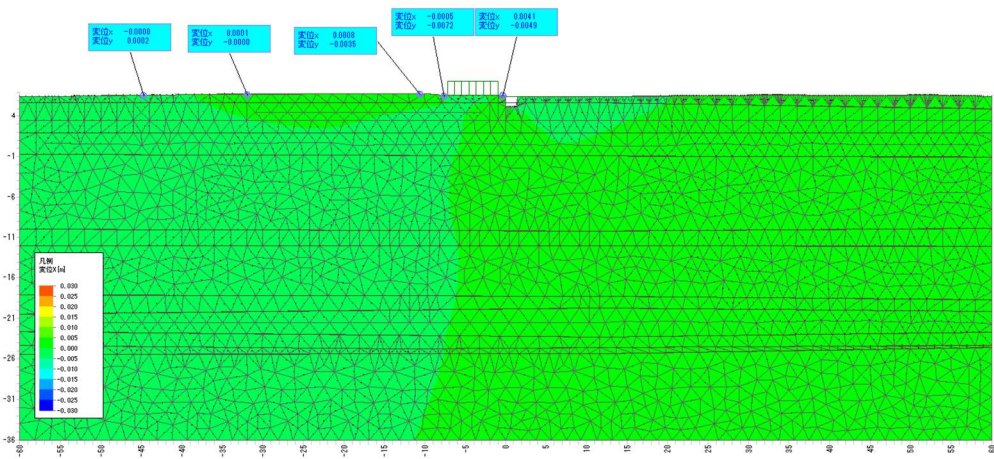


X変位図

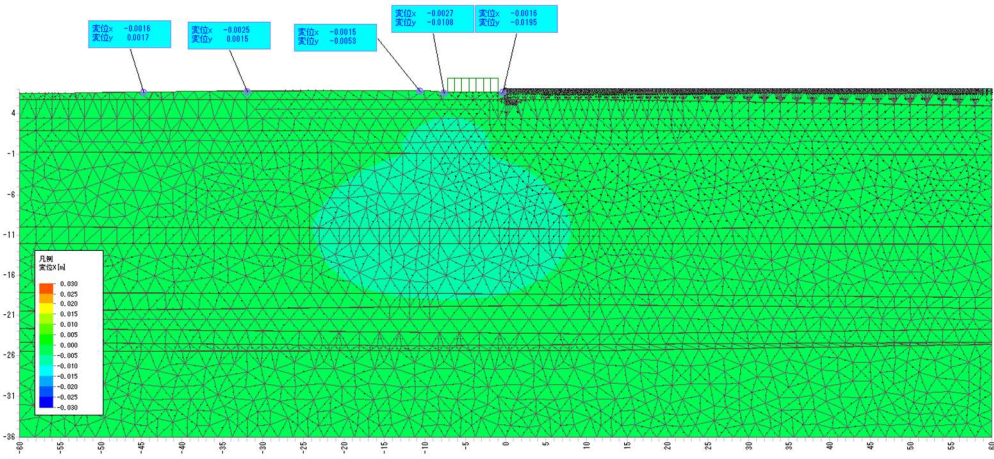
現地形



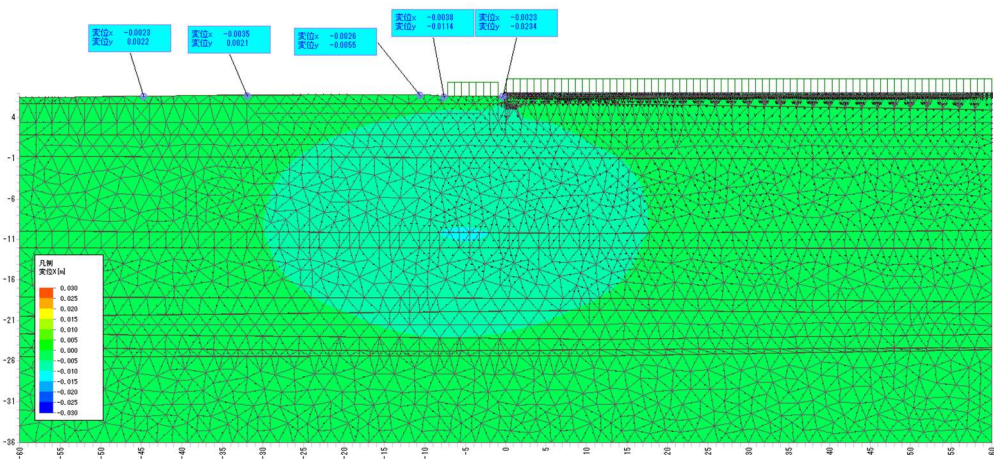
掘削



造成後

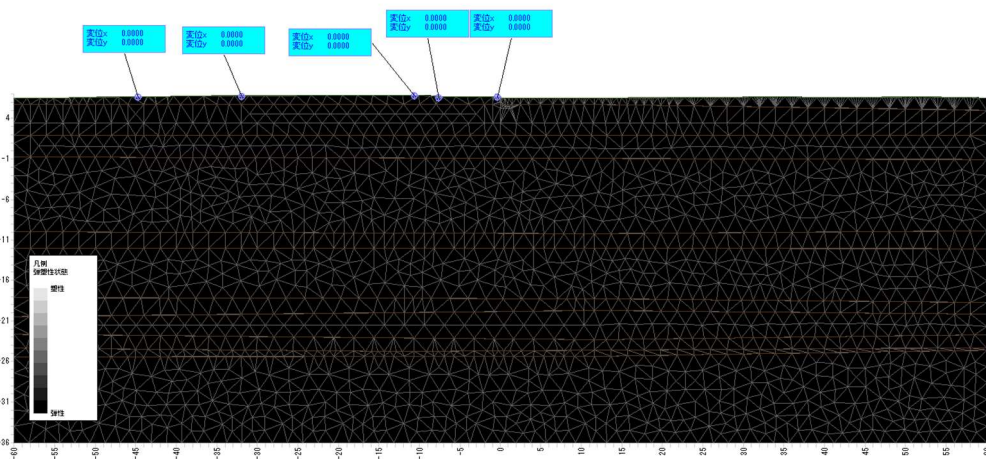


供用
(交通荷重)

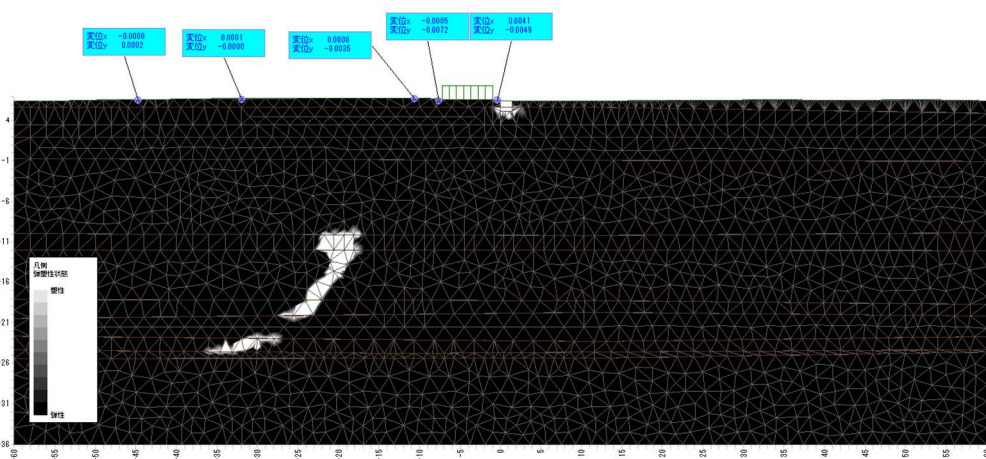


弾塑性図

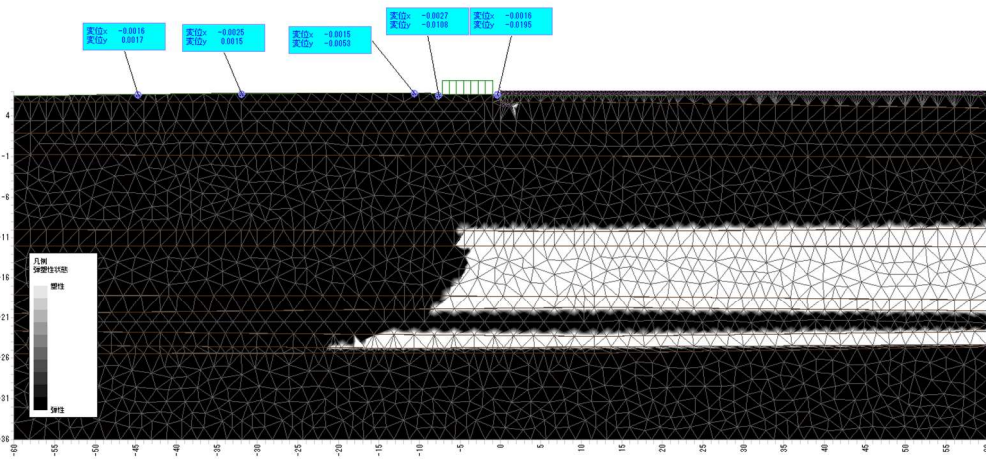
現地形



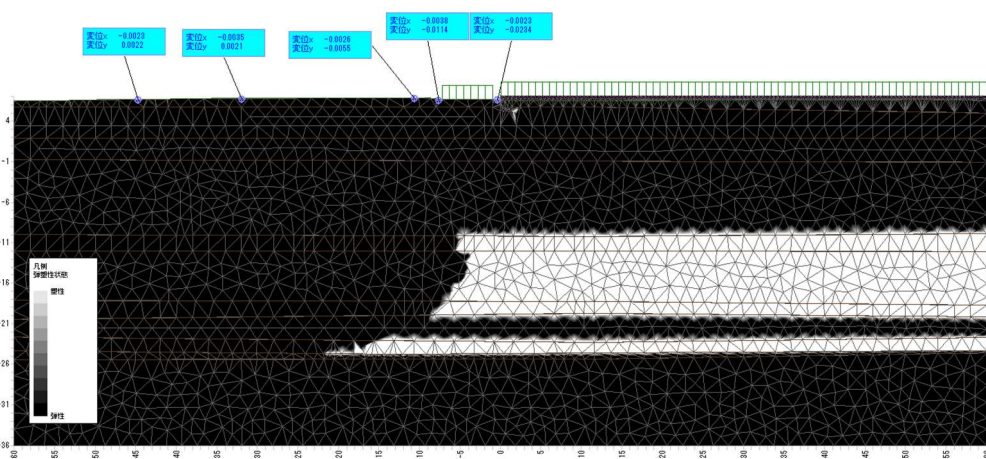
掘削

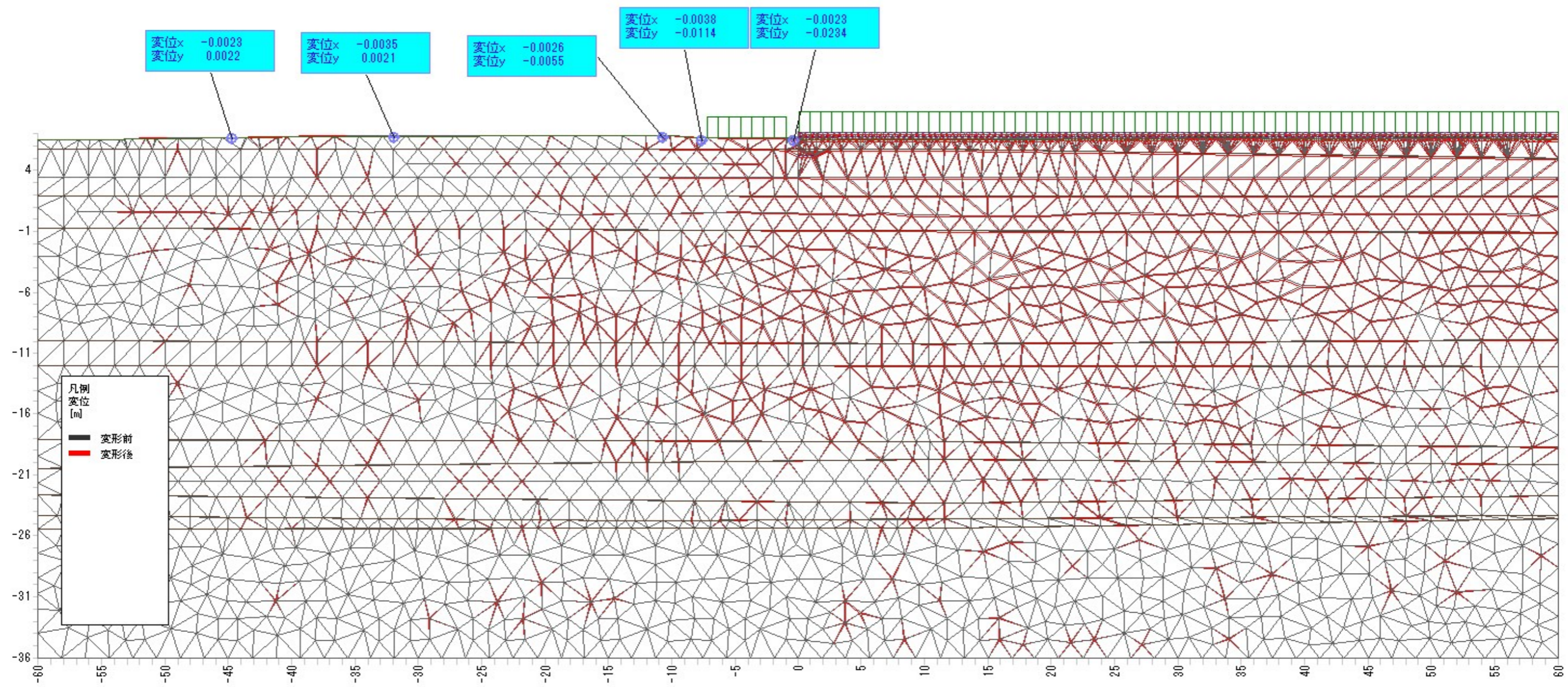


造成後

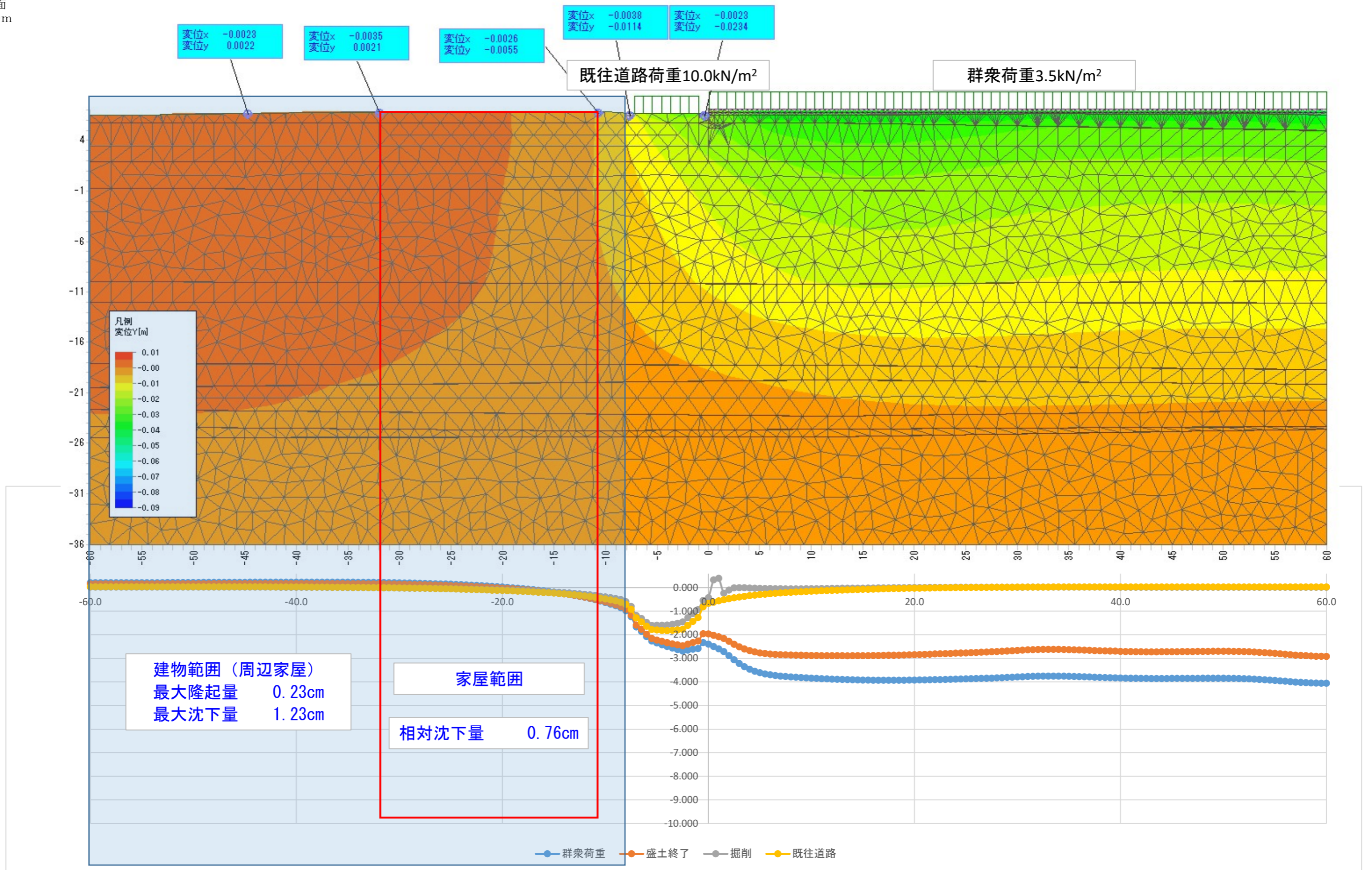


供用
(交通荷重)





E-E' 断面
GH=7.10m

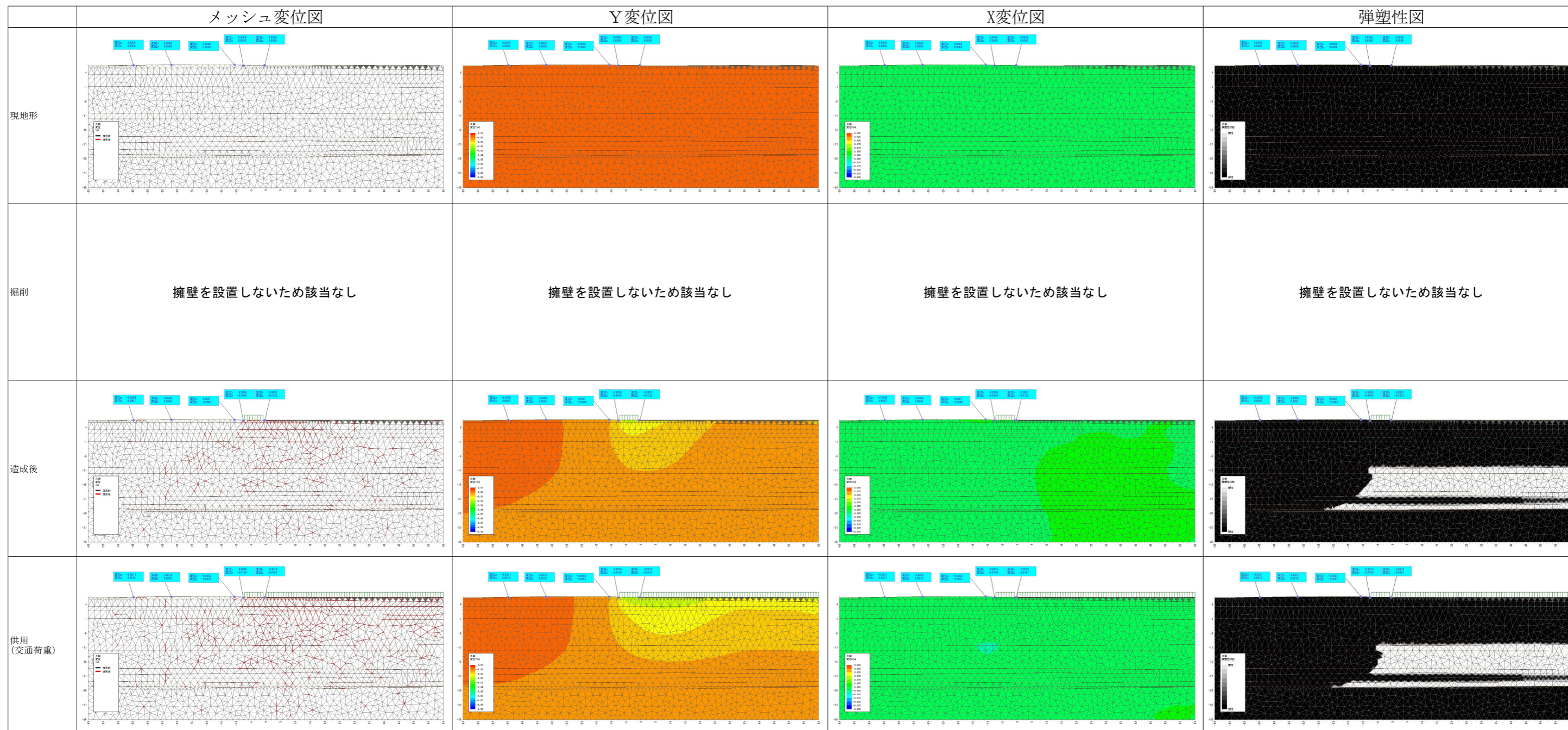


10m範囲の相対沈下量	位置 X(m)	沈下量(cm)			
		群衆荷重	盛土終了	掘削	既往道路
	-60.0	0.207	0.160	0.025	0.037
-0.01	-59.5	0.207	0.160	0.025	0.037
-0.01	-59.0	0.207	0.160	0.025	0.037
-0.01	-58.5	0.207	0.160	0.025	0.037
-0.01	-58.0	0.207	0.160	0.025	0.037
-0.01	-57.5	0.207	0.160	0.025	0.037
-0.01	-57.0	0.207	0.161	0.025	0.037
-0.01	-56.5	0.208	0.161	0.025	0.037
-0.01	-56.0	0.208	0.161	0.025	0.037
-0.02	-55.5	0.208	0.161	0.025	0.037
-0.02	-55.0	0.209	0.162	0.025	0.037
-0.02	-54.5	0.209	0.162	0.025	0.037
-0.02	-54.0	0.210	0.162	0.025	0.037
-0.02	-53.5	0.210	0.163	0.025	0.037
-0.02	-53.0	0.211	0.164	0.025	0.037
-0.02	-52.5	0.212	0.164	0.025	0.037
-0.02	-52.0	0.213	0.165	0.025	0.037
-0.02	-51.5	0.214	0.165	0.025	0.036
-0.02	-51.0	0.214	0.166	0.025	0.036
-0.02	-50.5	0.215	0.166	0.025	0.036
-0.01	-50.0	0.216	0.167	0.025	0.036
-0.01	-49.5	0.217	0.167	0.024	0.036
-0.01	-49.0	0.218	0.168	0.024	0.036
-0.01	-48.5	0.218	0.168	0.024	0.036
-0.01	-48.0	0.219	0.169	0.024	0.035
-0.01	-47.5	0.220	0.169	0.024	0.035
-0.01	-47.0	0.221	0.170	0.024	0.035
-0.01	-46.5	0.221	0.170	0.023	0.035
-0.01	-46.0	0.222	0.171	0.023	0.034
-0.02	-45.5	0.223	0.171	0.023	0.034
-0.02	-45.0	0.224	0.172	0.022	0.034
-0.02	-44.5	0.225	0.172	0.022	0.033
-0.02	-44.0	0.225	0.172	0.022	0.033
-0.02	-43.5	0.226	0.173	0.021	0.032
-0.02	-43.0	0.227	0.173	0.021	0.032
-0.02	-42.5	0.228	0.174	0.020	0.031
-0.02	-42.0	0.228	0.174	0.020	0.031
-0.02	-41.5	0.229	0.174	0.019	0.030
-0.02	-41.0	0.229	0.174	0.019	0.029
-0.02	-40.5	0.230	0.174	0.018	0.028
-0.01	-40.0	0.230	0.174	0.017	0.027
-0.01	-39.5	0.230	0.174	0.016	0.027
-0.01	-39.0	0.230	0.174	0.015	0.026
-0.01	-38.5	0.230	0.174	0.015	0.024
-0.01	-38.0	0.230	0.173	0.014	0.023
-0.01	-37.5	0.230	0.173	0.013	0.022
-0.01	-37.0	0.230	0.172	0.011	0.021
-0.01	-36.5	0.229	0.171	0.010	0.019
-0.01	-36.0	0.228	0.170	0.009	0.018
-0.01	-35.5	0.228	0.169	0.008	0.016
-0.01	-35.0	0.226	0.168	0.006	0.014
-0.01	-34.5	0.225	0.166	0.005	0.012
-0.01	-34.0	0.224	0.164	0.003	0.010
-0.01	-33.5	0.222	0.163	0.001	0.008
-0.01	-33.0	0.220	0.161	-0.001	0.006
-0.01	-32.5	0.218	0.158	-0.003	0.003
-0.01	-32.0	0.216	0.156	-0.005	0.001
-0.02	-31.5	0.213	0.153	-0.007	-0.002
-0.02	-31.0	0.210	0.150	-0.009	-0.005
-0.02	-30.5	0.207	0.147	-0.011	-0.008

10m範囲の相対沈下量	位置 X(m)	沈下量(cm)			
		群衆荷重	盛土終了	掘削	既往道路
	-30.0	0.203	0.143	-0.014	-0.011
-0.03	-29.5	0.199	0.139	-0.017	-0.014
-0.04	-29.0	0.195	0.135	-0.019	-0.018
-0.04	-28.5	0.190	0.130	-0.023	-0.022
-0.05	-28.0	0.185	0.125	-0.026	-0.026
-0.05	-27.5	0.179	0.120	-0.029	-0.030
-0.06	-27.0	0.173	0.114	-0.032	-0.034
-0.06	-26.5	0.166	0.108	-0.036	-0.039
-0.07	-26.0	0.159	0.101	-0.040	-0.044
-0.08	-25.5	0.152	0.094	-0.044	-0.049
-0.08	-25.0	0.144	0.087	-0.048	-0.054
-0.09	-24.5	0.135	0.079	-0.052	-0.060
-0.10	-24.0	0.126	0.070	-0.057	-0.065
-0.11	-23.5	0.116	0.061	-0.062	-0.071
-0.12	-23.0	0.105	0.052	-0.067	-0.078
-0.12	-22.5	0.094	0.042	-0.072	-0.084
-0.13	-22.0	0.082	0.031	-0.077	-0.091
-0.14	-21.5	0.069	0.020	-0.082	-0.099
-0.15	-21.0	0.056	0.007	-0.088	-0.106
-0.17	-20.5	0.042	-0.005	-0.094	-0.114
-0.18	-20.0	0.026	-0.019	-0.101	-0.122
-0.19	-19.5	0.010	-0.033	-0.107	-0.131
-0.20	-19.0	-0.007	-0.048	-0.114	-0.140
-0.22	-18.5	-0.025	-0.064	-0.122	-0.149
-0.23	-18.0	-0.044	-0.081	-0.129	-0.160
-0.24	-17.5	-0.065	-0.099	-0.137	-0.170
-0.26	-17.0	-0.086	-0.118	-0.146	-0.181
-0.28	-16.5	-0.109	-0.139	-0.155	-0.193
-0.29	-16.0	-0.134	-0.160	-0.165	-0.206
-0.31	-15.5	-0.160	-0.184	-0.176	-0.219
-0.33	-15.0	-0.188	-0.208	-0.187	-0.233
-0.35	-14.5	-0.219	-0.235	-0.200	-0.249
-0.38	-14.0	-0.251	-0.263	-0.213	-0.266
-0.40	-13.5	-0.286	-0.295	-0.228	-0.285
-0.43	-13.0	-0.323	-0.327	-0.244	-0.305
-0.46	-12.5	-0.366	-0.365	-0.264	-0.328
-0.49	-12.0	-0.409	-0.404	-0.284	-0.352
-0.53	-11.5	-0.459	-0.448	-0.307	-0.380
-0.57	-11.0	-0.510	-0.494	-0.332	-0.409
-0.61	-10.5	-0.570	-0.547	-0.362	-0.445
-0.66	-10.0	-0.631	-0.603	-0.392	-0.481
-0.71	-9.5	-0.698	-0.663	-0.426	-0.521
-0.76	-9.0	-0.770	-0.727	-0.462	-0.563
-0.83	-8.5	-0.854	-0.804	-0.508	-0.617
-0.94	-8.0	-0.981	-0.922	-0.593	-0.710
-1.17	-7.5	-1.234	-1.165	-0.798	-0.924
-1.58	-7.0	-1.668	-1.590	-1.183	-1.283
-1.75	-6.5	-1.854	-1.764	-1.310	-1.459
-1.94	-6.0	-2.076	-1.975	-1.474	-1.636
-2.10	-5.5	-2.264	-2.151	-1.599	-1.777
-2.16	-5.0	-2.346	-2.219	-1.597	-1.792
-2.20	-4.5	-2.422	-2.279	-1.595	-1.817
-2.24	-4.0	-2.495	-2.335	-1.589	-1.823
-2.28	-3.5	-2.562	-2.383	-1.559	-1.814
-2.30	-3.0	-2.627	-2.427	-1.514	-1.796
-2.33	-2.5	-2.691	-2.467	-1.460	-1.769
-2.28	-2.0	-2.651	-2.395	-1.280	-1.598
-2.23	-1.5	-2.615	-2.327	-1.104	-1.431
-2.18	-1.0	-2.585	-2.265	-0.933	-1.271
-2.12	-0.5	-2.327	-1.957	-0.541	-0.810

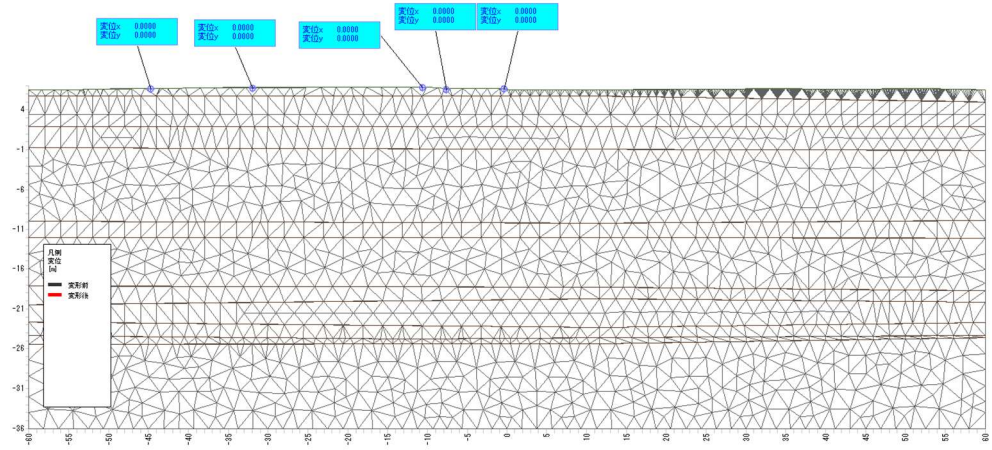
10m範囲の相対沈下量	沈下量 (cm)				
	位置 X(m)	群衆荷重	盛土終了	掘削	既往道路
-2.06	0.0	-2.395	-1.958	-0.425	-0.667
-1.99	0.5	-2.494	-2.021	0.328	-0.616
-1.92	1.0	-2.595	-2.085	0.395	-0.563
-1.86	1.5	-2.712	-2.161	-0.236	-0.515
-1.90	2.0	-2.885	-2.28	-0.102	-0.471
-1.82	2.5	-3.058	-2.399	-0.011	-0.433
-1.55	3.0	-3.217	-2.507	-0.003	-0.399
-1.50	3.5	-3.352	-2.598	-0.005	-0.369
-1.39	4.0	-3.461	-2.671	-0.015	-0.341
-1.28	4.5	-3.546	-2.725	-0.025	-0.317
-1.28	5.0	-3.611	-2.766	-0.032	-0.295
-1.33	5.5	-3.66	-2.795	-0.038	-0.275
-1.37	6.0	-3.698	-2.816	-0.043	-0.257
-1.40	6.5	-3.727	-2.831	-0.047	-0.241
-1.42	7.0	-3.75	-2.843	-0.049	-0.225
-1.44	7.5	-3.769	-2.851	-0.051	-0.211
-1.46	8.0	-3.786	-2.858	-0.051	-0.198
-1.47	8.5	-3.801	-2.864	-0.051	-0.186
-1.49	9.0	-3.815	-2.869	-0.05	-0.175
-1.50	9.5	-3.827	-2.874	-0.048	-0.164
-1.44	10.0	-3.839	-2.878	-0.046	-0.154
-1.36	10.5	-3.85	-2.881	-0.044	-0.144
-1.27	11.0	-3.861	-2.884	-0.041	-0.135
-1.16	11.5	-3.87	-2.886	-0.039	-0.126
-0.99	12.0	-3.879	-2.888	-0.036	-0.117
-0.83	12.5	-3.887	-2.89	-0.033	-0.109
-0.68	13.0	-3.895	-2.89	-0.03	-0.102
-0.55	13.5	-3.902	-2.891	-0.027	-0.094
-0.45	14.0	-3.907	-2.89	-0.024	-0.087
-0.37	14.5	-3.912	-2.889	-0.021	-0.081
-0.31	15.0	-3.917	-2.887	-0.019	-0.074
-0.26	15.5	-3.92	-2.885	-0.016	-0.068
-0.22	16.0	-3.922	-2.882	-0.013	-0.062
-0.20	16.5	-3.924	-2.879	-0.011	-0.057
-0.18	17.0	-3.925	-2.875	-0.009	-0.051
-0.16	17.5	-3.925	-2.871	-0.006	-0.046
-0.14	18.0	-3.925	-2.866	-0.004	-0.041
-0.12	18.5	-3.924	-2.86	-0.002	-0.037
-0.11	19.0	-3.922	-2.855	0	-0.032
-0.10	19.5	-3.92	-2.849	0.002	-0.028
-0.09	20.0	-3.918	-2.843	0.003	-0.024
-0.07	20.5	-3.915	-2.836	0.005	-0.02
-0.06	21.0	-3.911	-2.829	0.006	-0.017
-0.05	21.5	-3.907	-2.822	0.008	-0.014
-0.05	22.0	-3.903	-2.815	0.009	-0.01
-0.04	22.5	-3.898	-2.807	0.01	-0.007
-0.03	23.0	-3.893	-2.799	0.011	-0.005
-0.04	23.5	-3.888	-2.791	0.012	-0.002
-0.04	24.0	-3.882	-2.783	0.013	0.001
-0.05	24.5	-3.876	-2.775	0.014	0.003
-0.05	25.0	-3.87	-2.766	0.015	0.005
-0.06	25.5	-3.864	-2.758	0.015	0.007
-0.07	26.0	-3.857	-2.749	0.016	0.009
-0.07	26.5	-3.85	-2.74	0.016	0.011
-0.08	27.0	-3.843	-2.731	0.017	0.012
-0.09	27.5	-3.835	-2.721	0.017	0.014
-0.10	28.0	-3.827	-2.711	0.018	0.015
-0.11	28.5	-3.818	-2.7	0.018	0.017
-0.11	29.0	-3.809	-2.689	0.019	0.018
-0.12	29.5	-3.799	-2.677	0.019	0.019

10m範囲の相対沈下量	沈下量 (cm)				
	位置 X(m)	群衆荷重	盛土終了	掘削	既往道路
-0.13	30.0	-3.789	-2.665	0.019	0.02
-0.14	30.5	-3.779	-2.653	0.019	0.021
-0.14	31.0	-3.77	-2.641	0.02	0.022
-0.14	31.5	-3.763	-2.632	0.02	0.023
-0.15	32.0	-3.757	-2.624	0.02	0.024
-0.15	32.5	-3.753	-2.62	0.02	0.024
-0.14	33.0	-3.752	-2.618	0.02	0.025
-0.14	33.5	-3.753	-2.619	0.02	0.026
-0.13	34.0	-3.755	-2.622	0.02	0.026
-0.12	34.5	-3.759	-2.626	0.02	0.027
-0.12	35.0	-3.764	-2.631	0.02	0.027
-0.11	35.5	-3.77	-2.637	0.02	0.027
-0.11	36.0	-3.777	-2.644	0.02	0.028
-0.10	36.5	-3.783	-2.651	0.02	0.028
-0.09	37.0	-3.791	-2.659	0.02	0.028
-0.08	37.5	-3.798	-2.667	0.02	0.029
-0.08	38.0	-3.805	-2.674	0.02	0.029
-0.07	38.5	-3.813	-2.682	0.02	0.029
-0.07	39.0	-3.82	-2.69	0.019	0.029
-0.08	39.5	-3.827	-2.697	0.019	0.029
-0.08	40.0	-3.833	-2.704	0.019	0.029
-0.09	40.5	-3.839	-2.71	0.019	0.029
-0.09	41.0	-3.844	-2.714	0.019	0.029
-0.10	41.5	-3.847	-2.718	0.019	0.029
-0.10	42.0	-3.851	-2.721	0.019	0.029
-0.10	42.5	-3.853	-2.723	0.019	0.029
-0.10	43.0	-3.854	-2.723	0.018	0.029
-0.10	43.5	-3.855	-2.723	0.018	0.029
-0.10	44.0	-3.854	-2.722	0.018	0.029
-0.10	44.5	-3.854	-2.72	0.018	0.029
-0.09	45.0	-3.853	-2.719	0.018	0.029
-0.09	45.5	-3.852	-2.717	0.018	0.029
-0.08	46.0	-3.851	-2.715	0.018	0.029
-0.07	46.5	-3.85	-2.713	0.017	0.029
-0.06	47.0	-3.849	-2.711	0.017	0.029
-0.06	47.5	-3.848	-2.709	0.017	0.029
-0.05	48.0	-3.847	-2.707	0.017	0.029
-0.04	48.5	-3.846	-2.705	0.017	0.028
-0.04	49.0	-3.846	-2.703	0.017	0.028
-0.03	49.5	-3.846	-2.702	0.017	0.028
-0.02	50.0	-3.847	-2.702	0.017	0.028
-0.02	50.5	-3.848	-2.702	0.016	0.028
-0.01	51.0	-3.851	-2.704	0.016	0.028
-0.01	51.5	-3.855	-2.707	0.016	0.028
-0.02	52.0	-3.861	-2.712	0.016	0.028
-0.02	52.5	-3.869	-2.72	0.016	0.028
-0.03	53.0	-3.879	-2.729	0.016	0.028
-0.04	53.5	-3.891	-2.741	0.016	0.028
-0.06	54.0	-3.904	-2.756	0.016	0.027
-0.07	54.5	-3.919	-2.771	0.016	0.027
-0.09	55.0	-3.936	-2.788	0.016	0.027
-0.11	55.5	-3.953	-2.806	0.016	0.027
-0.12	56.0	-3.97	-2.824	0.016	0.027
-0.14	56.5	-3.987	-2.842	0.015	0.027
-0.16	57.0	-4.003	-2.859	0.015	0.027
-0.17	57.5	-4.018	-2.874	0.015	0.027
-0.19	58.0	-4.031	-2.888	0.015	0.027
-0.20	58.5	-4.042	-2.9	0.015	0.027
-0.20	59.0	-4.05	-2.909	0.015	0.027
-0.21	59.5	-4.055	-2.914	0.015	0.027
-0.21	60.0	-4.056	-2.916	0.015	0.027



メッシュ変位図

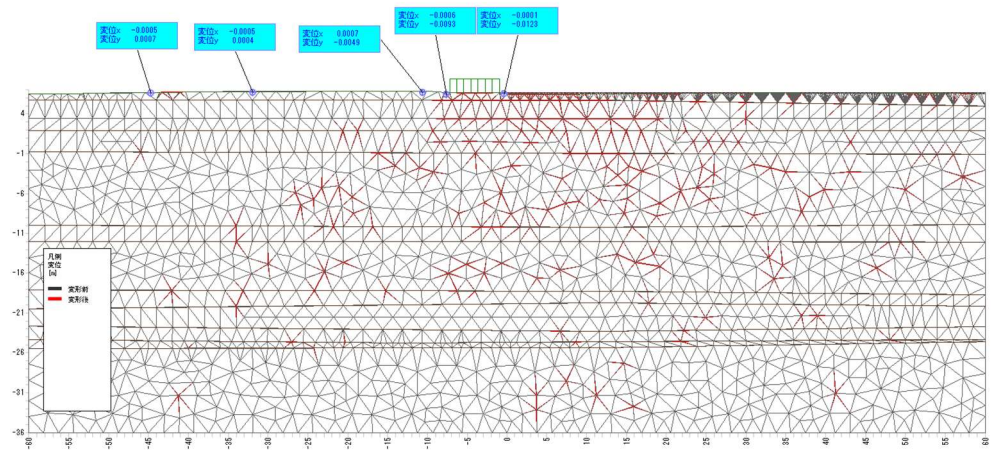
現地形



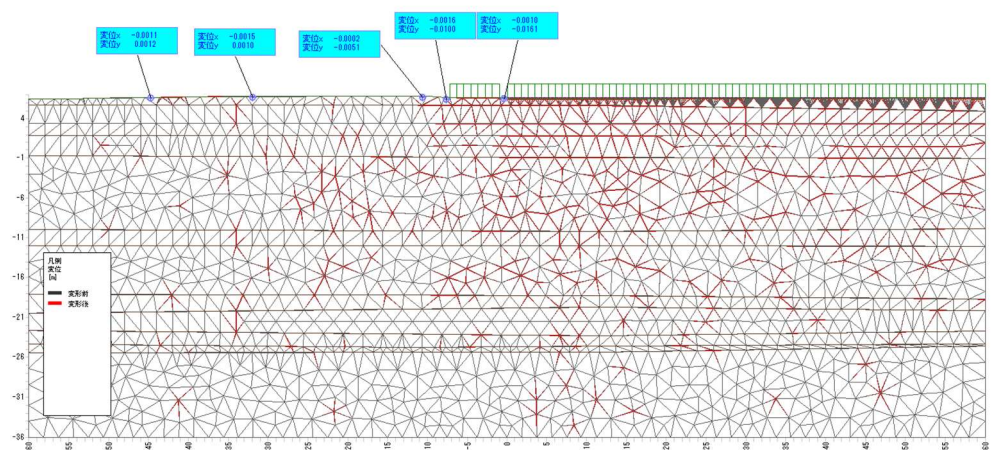
掘削

擁壁を設置しないため該当なし

造成後

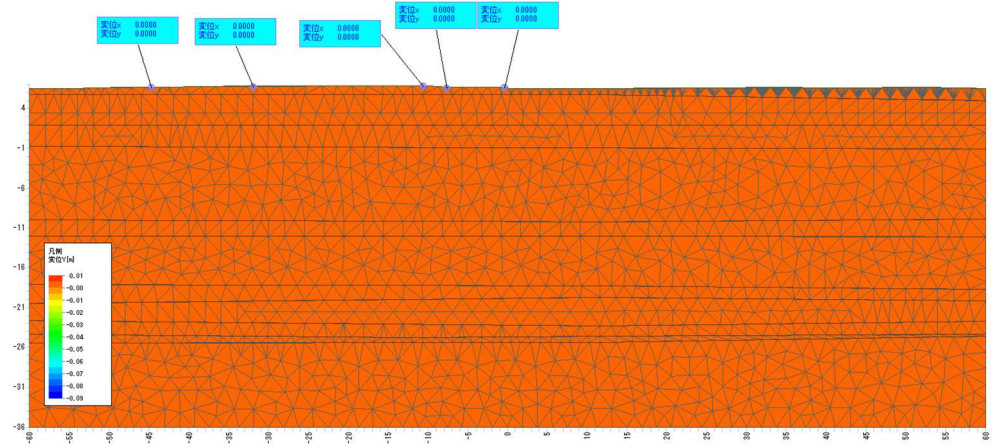


供用
(交通荷重)



Y変位図

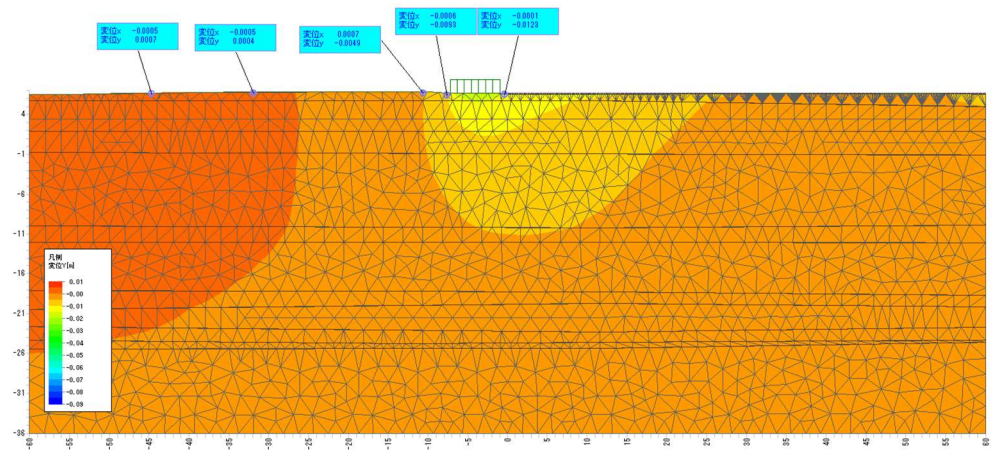
現地形



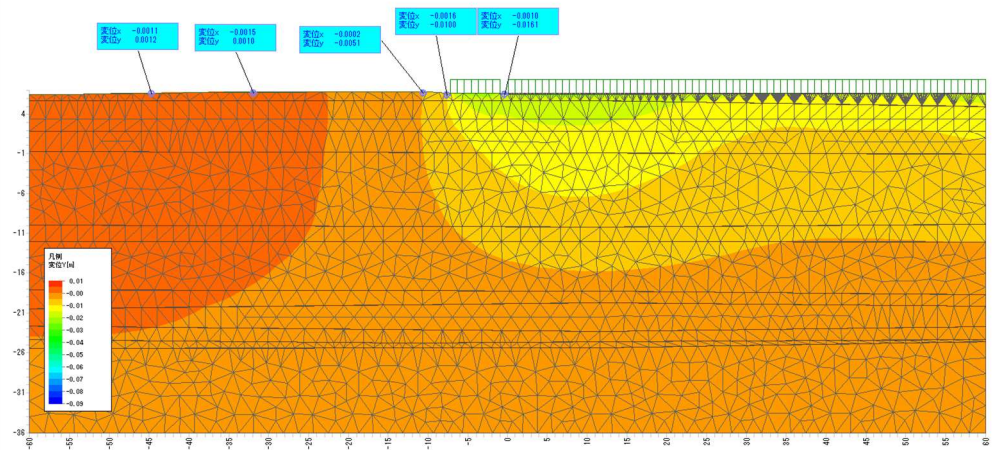
掘削

擁壁を設置しないため該当なし

造成後

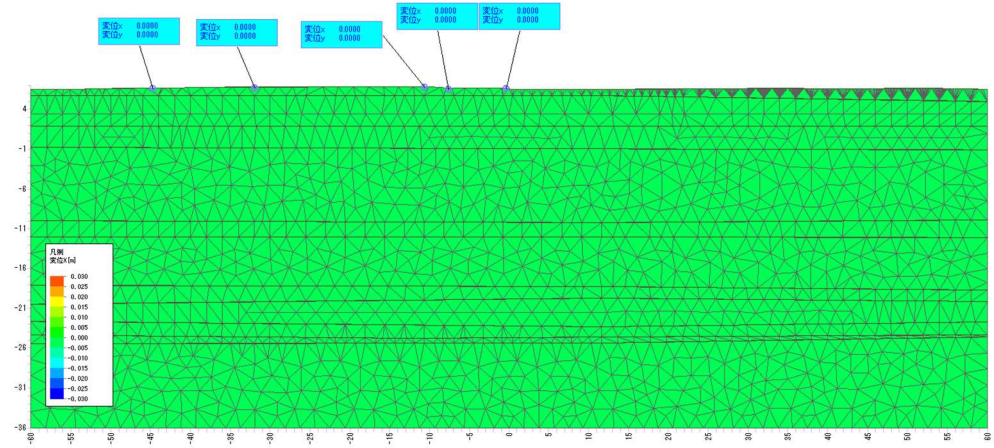


供用
(交通荷重)



X変位図

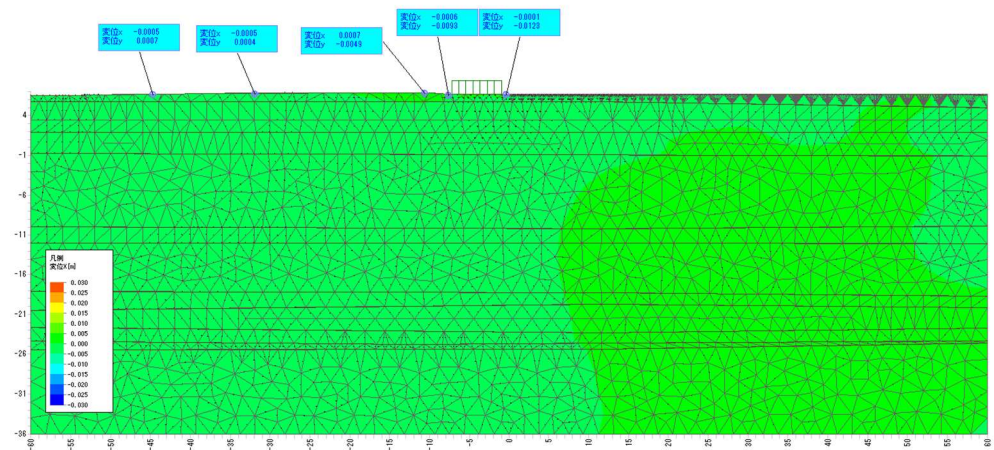
現地形



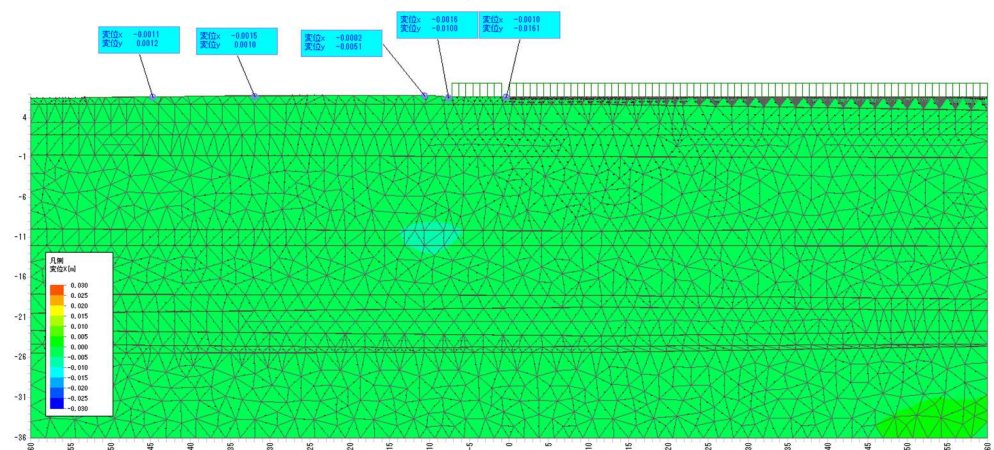
掘削

擁壁を設置しないため該当なし

造成後

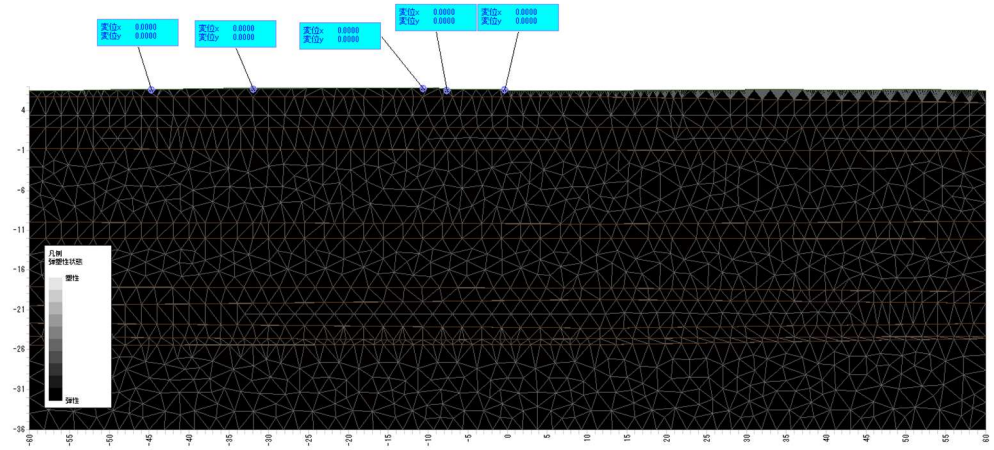


供用
(交通荷重)



弾塑性図

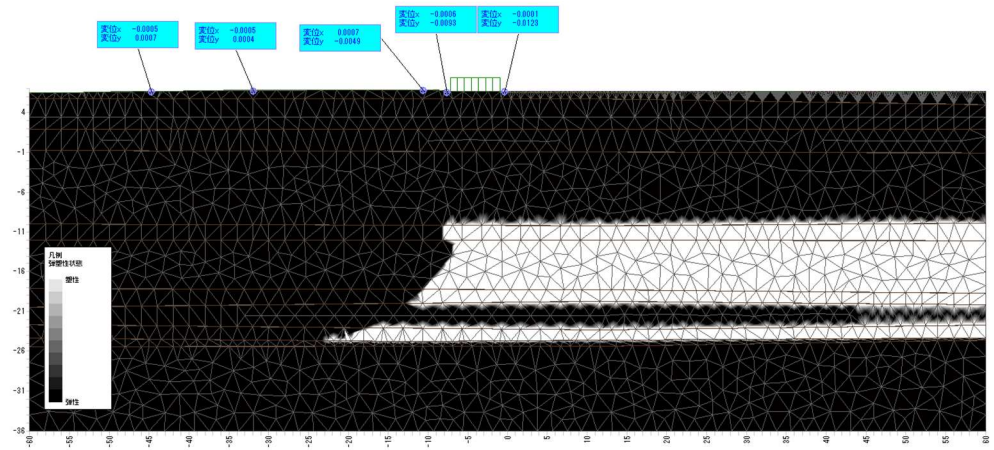
現地形



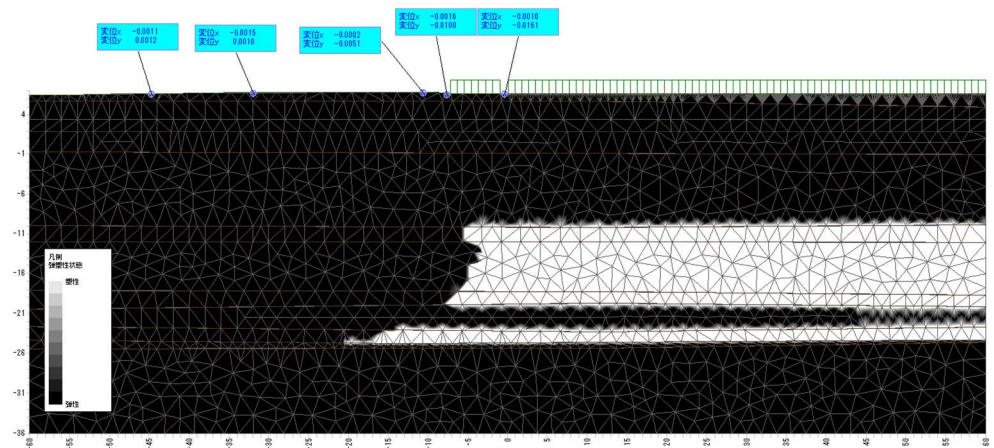
掘削

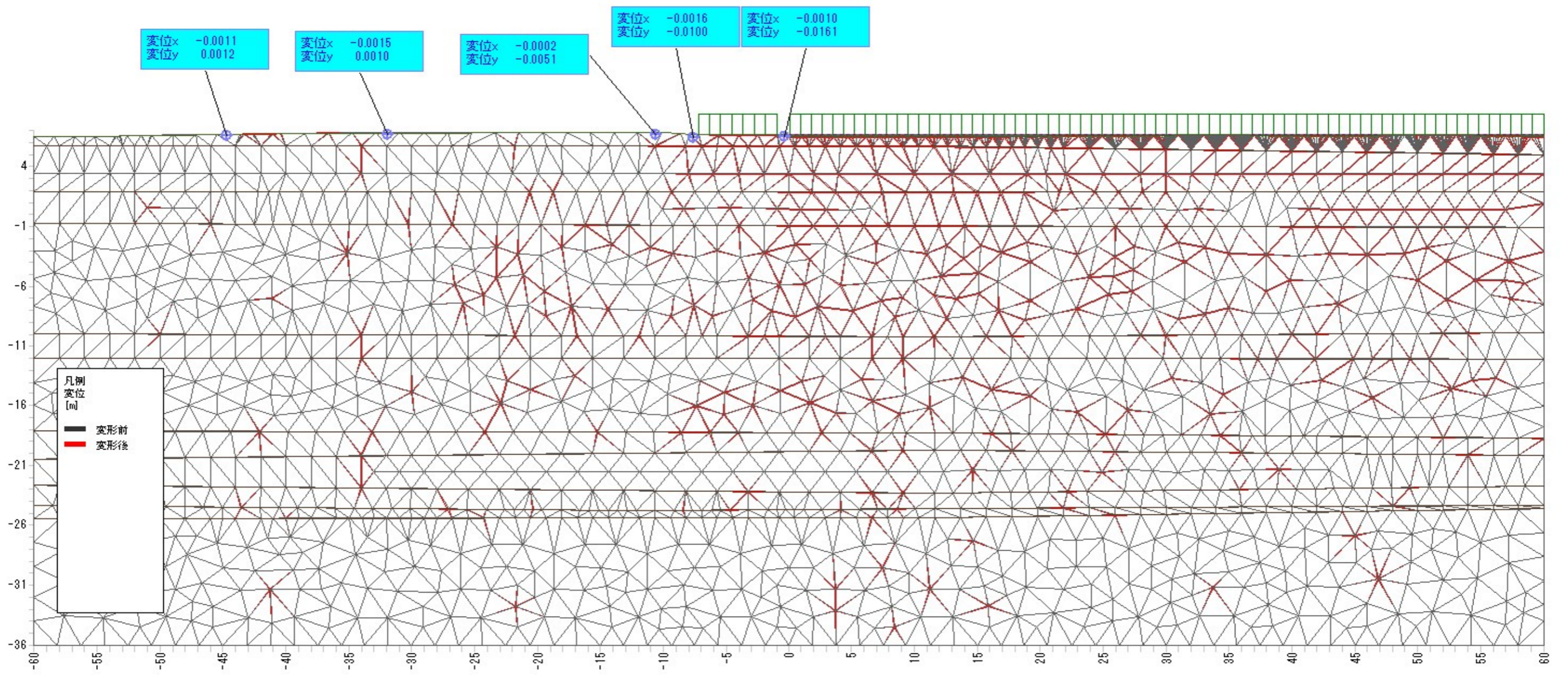
擁壁を設置しないため該当なし

造成後

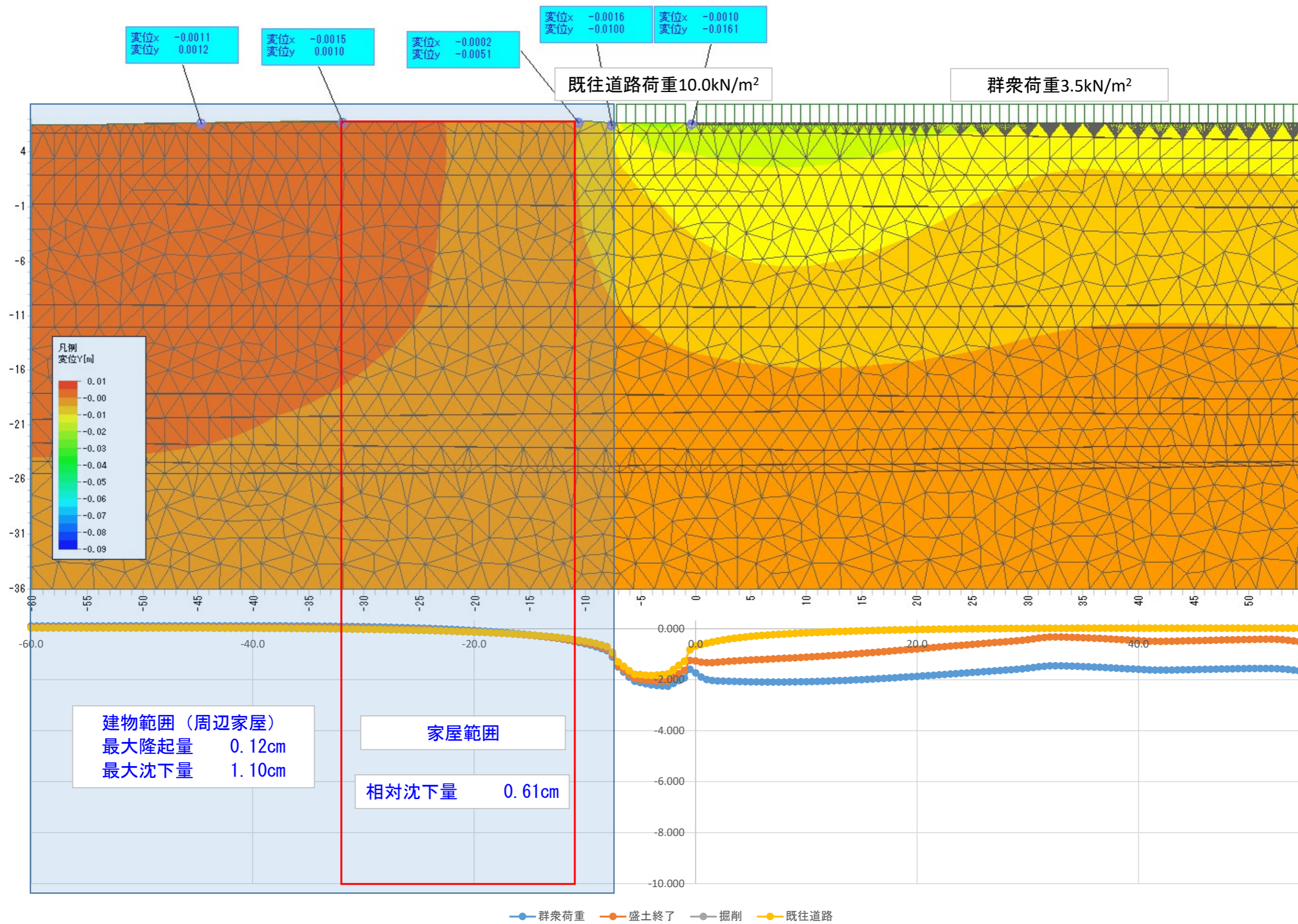


供用
(交通荷重)





E-E' 断面
GH=6.70m





10m範囲の相対沈下量	位置 X(m)	沈下量(cm)			
		群衆荷重	盛土終了	掘削	既往道路
-60.0	0.117	0.071	0.037	0.037	
0.00	-59.5	0.117	0.071	0.037	
0.00	-59.0	0.117	0.071	0.037	
0.00	-58.5	0.117	0.071	0.037	
-0.01	-58.0	0.117	0.071	0.037	
-0.01	-57.5	0.117	0.071	0.037	
-0.01	-57.0	0.118	0.071	0.037	
-0.01	-56.5	0.118	0.071	0.037	
-0.01	-56.0	0.118	0.071	0.037	
-0.01	-55.5	0.118	0.071	0.037	
-0.01	-55.0	0.118	0.072	0.037	
-0.01	-54.5	0.118	0.072	0.037	
-0.01	-54.0	0.119	0.072	0.037	
-0.01	-53.5	0.119	0.072	0.037	
-0.01	-53.0	0.119	0.072	0.037	
0.00	-52.5	0.120	0.072	0.037	
0.00	-52.0	0.120	0.072	0.037	
0.00	-51.5	0.120	0.072	0.036	
0.00	-51.0	0.121	0.072	0.036	
0.00	-50.5	0.121	0.072	0.036	
0.00	-50.0	0.121	0.072	0.036	
0.00	-49.5	0.122	0.073	0.036	
0.00	-49.0	0.122	0.073	0.036	
-0.01	-48.5	0.122	0.073	0.036	
-0.01	-48.0	0.123	0.073	0.035	
-0.01	-47.5	0.123	0.073	0.035	
-0.01	-47.0	0.123	0.072	0.035	
-0.01	-46.5	0.123	0.072	0.035	
-0.01	-46.0	0.123	0.072	0.034	
-0.01	-45.5	0.124	0.072	0.034	
-0.01	-45.0	0.124	0.072	0.034	
-0.01	-44.5	0.124	0.072	0.033	
-0.01	-44.0	0.124	0.072	0.033	
-0.01	-43.5	0.124	0.071	0.032	
-0.01	-43.0	0.124	0.071	0.032	
0.00	-42.5	0.124	0.071	0.031	
0.00	-42.0	0.124	0.070	0.031	
0.00	-41.5	0.124	0.070	0.030	
0.00	-41.0	0.124	0.069	0.029	
0.00	-40.5	0.124	0.069	0.028	
0.00	-40.0	0.124	0.068	0.027	
0.00	-39.5	0.123	0.067	0.027	
0.00	-39.0	0.123	0.066	0.026	
0.00	-38.5	0.122	0.065	0.024	
0.00	-38.0	0.121	0.064	0.023	
0.00	-37.5	0.120	0.063	0.022	
0.00	-37.0	0.120	0.062	0.021	
-0.01	-36.5	0.118	0.061	0.019	
-0.01	-36.0	0.117	0.059	0.018	
-0.01	-35.5	0.116	0.058	0.016	
-0.01	-35.0	0.114	0.056	0.014	
-0.01	-34.5	0.113	0.054	0.012	
-0.01	-34.0	0.111	0.052	0.010	
-0.02	-33.5	0.109	0.050	0.008	
-0.02	-33.0	0.107	0.047	0.006	
-0.02	-32.5	0.104	0.045	0.003	
-0.02	-32.0	0.102	0.042	0.001	
-0.03	-31.5	0.099	0.039	-0.002	
-0.03	-31.0	0.096	0.036	-0.005	
-0.03	-30.5	0.093	0.033	-0.008	

10m範囲の相対沈下量	位置 X(m)	沈下量(cm)			
		群衆荷重	盛土終了	掘削	既往道路
-0.04	-30.0	0.089	0.029	-0.011	-0.011
-0.04	-29.5	0.085	0.025	-0.014	-0.014
-0.04	-29.0	0.081	0.021	-0.018	-0.018
-0.05	-28.5	0.077	0.017	-0.022	-0.022
-0.05	-28.0	0.072	0.012	-0.026	-0.026
-0.05	-27.5	0.067	0.007	-0.030	-0.030
-0.06	-27.0	0.061	0.002	-0.034	-0.034
-0.06	-26.5	0.055	-0.003	-0.039	-0.039
-0.07	-26.0	0.049	-0.009	-0.044	-0.044
-0.07	-25.5	0.043	-0.015	-0.049	-0.049
-0.08	-25.0	0.036	-0.021	-0.054	-0.054
-0.09	-24.5	0.028	-0.028	-0.060	-0.060
-0.09	-24.0	0.021	-0.035	-0.065	-0.065
-0.10	-23.5	0.012	-0.042	-0.071	-0.071
-0.10	-23.0	0.004	-0.050	-0.078	-0.078
-0.11	-22.5	-0.006	-0.058	-0.084	-0.084
-0.12	-22.0	-0.016	-0.067	-0.091	-0.091
-0.13	-21.5	-0.026	-0.076	-0.099	-0.099
-0.13	-21.0	-0.037	-0.086	-0.106	-0.106
-0.14	-20.5	-0.048	-0.096	-0.114	-0.114
-0.15	-20.0	-0.060	-0.106	-0.122	-0.122
-0.16	-19.5	-0.073	-0.117	-0.131	-0.131
-0.17	-19.0	-0.087	-0.129	-0.140	-0.140
-0.18	-18.5	-0.101	-0.141	-0.149	-0.149
-0.19	-18.0	-0.116	-0.154	-0.160	-0.160
-0.20	-17.5	-0.132	-0.168	-0.170	-0.170
-0.21	-17.0	-0.149	-0.182	-0.181	-0.181
-0.22	-16.5	-0.167	-0.197	-0.193	-0.193
-0.24	-16.0	-0.186	-0.213	-0.206	-0.206
-0.25	-15.5	-0.207	-0.231	-0.219	-0.219
-0.27	-15.0	-0.229	-0.249	-0.233	-0.233
-0.28	-14.5	-0.252	-0.270	-0.249	-0.249
-0.30	-14.0	-0.277	-0.291	-0.266	-0.266
-0.32	-13.5	-0.306	-0.315	-0.285	-0.285
-0.34	-13.0	-0.334	-0.339	-0.305	-0.305
-0.36	-12.5	-0.368	-0.368	-0.328	-0.328
-0.39	-12.0	-0.402	-0.398	-0.352	-0.352
-0.42	-11.5	-0.443	-0.433	-0.381	-0.381
-0.45	-11.0	-0.484	-0.469	-0.411	-0.411
-0.48	-10.5	-0.531	-0.510	-0.445	-0.445
-0.52	-10.0	-0.581	-0.553	-0.481	-0.481
-0.56	-9.5	-0.635	-0.601	-0.521	-0.521
-0.61	-9.0	-0.700	-0.658	-0.570	-0.570
-0.67	-8.5	-0.772	-0.723	-0.626	-0.626
-0.74	-8.0	-0.856	-0.799	-0.693	-0.693
-0.97	-7.5	-1.102	-1.035	-0.920	-0.920
-1.35	-7.0	-1.494	-1.453	-1.291	-1.291
-1.53	-6.5	-1.693	-1.605	-1.467	-1.467
-1.71	-6.0	-1.892	-1.793	-1.642	-1.642
-1.85	-5.5	-2.056	-1.945	-1.782	-1.782
-1.88	-5.0	-2.105	-1.981	-1.797	-1.797
-1.90	-4.5	-2.151	-2.012	-1.817	-1.817
-1.92	-4.0	-2.193	-2.037	-1.826	-1.826
-1.91	-3.5	-2.218	-2.045	-1.813	-1.813
-1.91	-3.0	-2.239	-2.045	-1.793	-1.793
-1.89	-2.5	-2.254	-2.040	-1.766	-1.766
-1.85	-2.0	-2.139	-1.898	-1.596	-1.596
-1.81	-1.5	-2.028	-1.760	-1.430	-1.430
-1.77	-1.0	-1.922	-1.629	-1.271	-1.271
-1.72	-0.5	-1.587	-1.240	-0.815	-0.815

10m範囲の相対沈下量	位置 X(m)	沈下量 (cm)			
		群衆荷重	盛土終了	掘削	既往道路
-1.67	0.0	-1.726	-1.259	-0.666	-0.666
-1.62	0.5	-1.886	-1.308	-0.616	-0.616
-1.55	1.0	-1.983	-1.327	-0.561	-0.561
-1.48	1.5	-2.026	-1.322	-0.514	-0.514
-1.40	2.0	-2.042	-1.306	-0.472	-0.472
-1.15	2.5	-2.048	-1.288	-0.433	-0.433
-0.76	3.0	-2.053	-1.271	-0.399	-0.399
-0.67	3.5	-2.059	-1.257	-0.369	-0.369
-0.67	4.0	-2.065	-1.244	-0.342	-0.342
-0.67	4.5	-2.071	-1.232	-0.317	-0.317
-0.67	5.0	-2.076	-1.220	-0.295	-0.295
-0.67	5.5	-2.079	-1.209	-0.275	-0.275
-0.67	6.0	-2.082	-1.198	-0.257	-0.257
-0.67	6.5	-2.083	-1.187	-0.241	-0.241
-0.67	7.0	-2.084	-1.176	-0.225	-0.225
-0.67	7.5	-2.083	-1.165	-0.211	-0.211
-0.55	8.0	-2.082	-1.154	-0.198	-0.198
-0.50	8.5	-2.081	-1.143	-0.186	-0.186
-0.50	9.0	-2.078	-1.131	-0.175	-0.175
-0.50	9.5	-2.074	-1.120	-0.164	-0.164
-0.36	10.0	-2.070	-1.107	-0.154	-0.154
-0.20	10.5	-2.065	-1.095	-0.144	-0.144
-0.10	11.0	-2.060	-1.082	-0.135	-0.135
-0.06	11.5	-2.053	-1.069	-0.126	-0.126
-0.04	12.0	-2.046	-1.055	-0.117	-0.117
-0.05	12.5	-2.038	-1.040	-0.109	-0.109
-0.05	13.0	-2.030	-1.025	-0.102	-0.102
-0.06	13.5	-2.021	-1.009	-0.094	-0.094
-0.07	14.0	-2.011	-0.993	-0.087	-0.087
-0.08	14.5	-2.000	-0.976	-0.081	-0.081
-0.09	15.0	-1.990	-0.960	-0.074	-0.074
-0.11	15.5	-1.978	-0.943	-0.068	-0.068
-0.12	16.0	-1.966	-0.926	-0.062	-0.062
-0.13	16.5	-1.954	-0.908	-0.057	-0.057
-0.14	17.0	-1.942	-0.891	-0.051	-0.051
-0.15	17.5	-1.929	-0.874	-0.046	-0.046
-0.17	18.0	-1.915	-0.856	-0.041	-0.041
-0.18	18.5	-1.902	-0.838	-0.037	-0.037
-0.19	19.0	-1.888	-0.820	-0.032	-0.032
-0.20	19.5	-1.874	-0.802	-0.028	-0.028
-0.21	20.0	-1.860	-0.785	-0.024	-0.024
-0.22	20.5	-1.845	-0.767	-0.020	-0.020
-0.23	21.0	-1.831	-0.749	-0.017	-0.017
-0.24	21.5	-1.816	-0.731	-0.014	-0.014
-0.25	22.0	-1.801	-0.713	-0.010	-0.010
-0.25	22.5	-1.786	-0.695	-0.007	-0.007
-0.26	23.0	-1.771	-0.677	-0.005	-0.005
-0.27	23.5	-1.755	-0.659	-0.002	-0.002
-0.27	24.0	-1.740	-0.642	0.001	0.001
-0.28	24.5	-1.725	-0.624	0.003	0.003
-0.28	25.0	-1.709	-0.606	0.005	0.005
-0.28	25.5	-1.694	-0.589	0.007	0.007
-0.29	26.0	-1.678	-0.571	0.009	0.009
-0.29	26.5	-1.663	-0.553	0.011	0.011
-0.30	27.0	-1.647	-0.536	0.012	0.012
-0.30	27.5	-1.631	-0.519	0.014	0.014
-0.30	28.0	-1.616	-0.501	0.015	0.015
-0.30	28.5	-1.600	-0.484	0.017	0.017
-0.30	29.0	-1.585	-0.467	0.018	0.018
-0.31	29.5	-1.565	-0.446	0.019	0.019

10m範囲の相対沈下量	位置 X(m)	沈下量 (cm)			
		群衆荷重	盛土終了	掘削	既往道路
-0.32	30.0	-1.542	-0.420	0.020	0.020
-0.33	30.5	-1.515	-0.390	0.021	0.021
-0.34	31.0	-1.487	-0.359	0.022	0.022
-0.35	31.5	-1.465	-0.335	0.023	0.023
-0.35	32.0	-1.450	-0.317	0.024	0.024
-0.34	32.5	-1.447	-0.314	0.024	0.024
-0.32	33.0	-1.447	-0.315	0.025	0.025
-0.31	33.5	-1.454	-0.322	0.026	0.026
-0.29	34.0	-1.460	-0.328	0.026	0.026
-0.28	34.5	-1.467	-0.336	0.027	0.027
-0.26	35.0	-1.476	-0.345	0.027	0.027
-0.25	35.5	-1.485	-0.354	0.027	0.027
-0.23	36.0	-1.495	-0.364	0.028	0.028
-0.22	36.5	-1.505	-0.375	0.028	0.028
-0.20	37.0	-1.516	-0.386	0.028	0.028
-0.18	37.5	-1.528	-0.398	0.029	0.029
-0.17	38.0	-1.539	-0.410	0.029	0.029
-0.15	38.5	-1.551	-0.422	0.029	0.029
-0.14	39.0	-1.563	-0.434	0.029	0.029
-0.13	39.5	-1.574	-0.446	0.029	0.029
-0.14	40.0	-1.586	-0.458	0.029	0.029
-0.15	40.5	-1.598	-0.470	0.029	0.029
-0.16	41.0	-1.608	-0.481	0.029	0.029
-0.17	41.5	-1.613	-0.486	0.029	0.029
-0.17	42.0	-1.615	-0.488	0.029	0.029
-0.17	42.5	-1.614	-0.485	0.029	0.029
-0.17	43.0	-1.612	-0.482	0.029	0.029
-0.16	43.5	-1.608	-0.477	0.029	0.029
-0.16	44.0	-1.604	-0.473	0.029	0.029
-0.15	44.5	-1.600	-0.468	0.029	0.029
-0.14	45.0	-1.596	-0.463	0.029	0.029
-0.13	45.5	-1.591	-0.457	0.029	0.029
-0.12	46.0	-1.587	-0.452	0.029	0.029
-0.11	46.5	-1.583	-0.447	0.029	0.029
-0.10	47.0	-1.578	-0.441	0.029	0.029
-0.09	47.5	-1.574	-0.436	0.029	0.029
-0.08	48.0	-1.570	-0.431	0.029	0.029
-0.06	48.5	-1.566	-0.426	0.028	0.028
-0.05	49.0	-1.562	-0.421	0.028	0.028
-0.06	49.5	-1.559	-0.417	0.028	0.028
-0.06	50.0	-1.556	-0.413	0.028	0.028
-0.06	50.5	-1.553	-0.409	0.028	0.028
-0.06	51.0	-1.551	-0.405	0.028	0.028
-0.06	51.5	-1.551	-0.405	0.028	0.028
-0.06	52.0	-1.552	-0.405	0.028	0.028
-0.06	52.5	-1.559	-0.410	0.028	0.028
-0.06	53.0	-1.570	-0.421	0.028	0.028
-0.06	53.5	-1.593	-0.445	0.028	0.028
-0.07	54.0	-1.617	-0.470	0.027	0.027
-0.09	54.5	-1.643	-0.496	0.027	0.027
-0.12	55.0	-1.668	-0.522	0.027	0.027
-0.14	55.5	-1.694	-0.549	0.027	0.027
-0.17	56.0	-1.720	-0.575	0.027	0.027
-0.19	56.5	-1.745	-0.601	0.027	0.027
-0.22	57.0	-1.771	-0.627	0.027	0.027
-0.25	57.5	-1.796	-0.653	0.027	0.027
-0.27	58.0	-1.820	-0.678	0.027	0.027
-0.29	58.5	-1.844	-0.702	0.027	0.027
-0.31	59.0	-1.865	-0.724	0.027	0.027
-0.33	59.5	-1.877	-0.738	0.027	0.027
-0.33	60.0	-1.882	-0.743	0.027	0.027